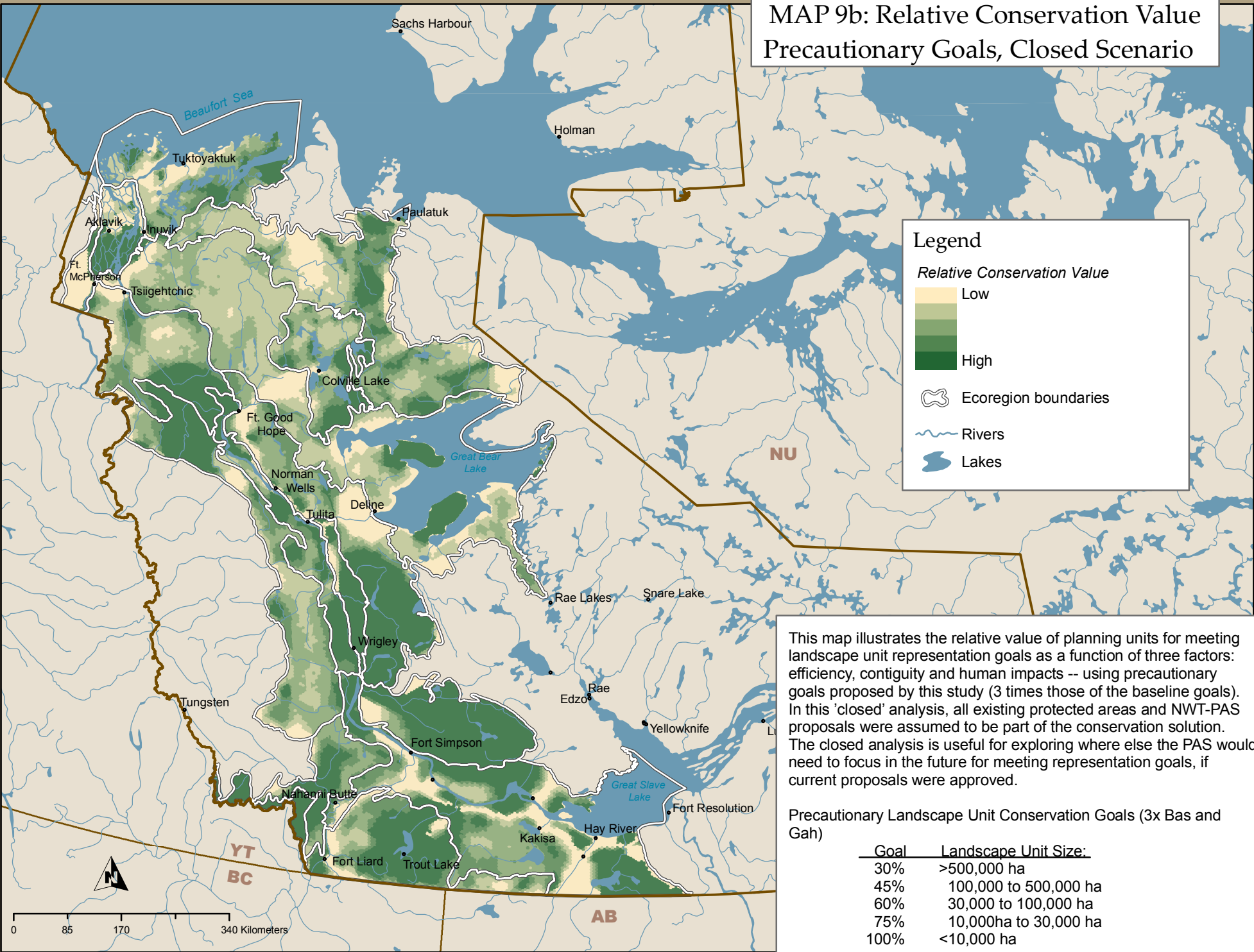


MAP 9b: Relative Conservation Value  
Precautionary Goals, Closed Scenario



**Legend**

*Relative Conservation Value*

- Low
- 
- 
- 
- High

- Ecoregion boundaries
- Rivers
- Lakes

This map illustrates the relative value of planning units for meeting landscape unit representation goals as a function of three factors: efficiency, contiguity and human impacts -- using precautionary goals proposed by this study (3 times those of the baseline goals). In this 'closed' analysis, all existing protected areas and NWT-PAS proposals were assumed to be part of the conservation solution. The closed analysis is useful for exploring where else the PAS would need to focus in the future for meeting representation goals, if current proposals were approved.

Precautionary Landscape Unit Conservation Goals (3x Bas and Gah)

Goal	Landscape Unit Size:
30%	>500,000 ha
45%	100,000 to 500,000 ha
60%	30,000 to 100,000 ha
75%	10,000ha to 30,000 ha
100%	<10,000 ha