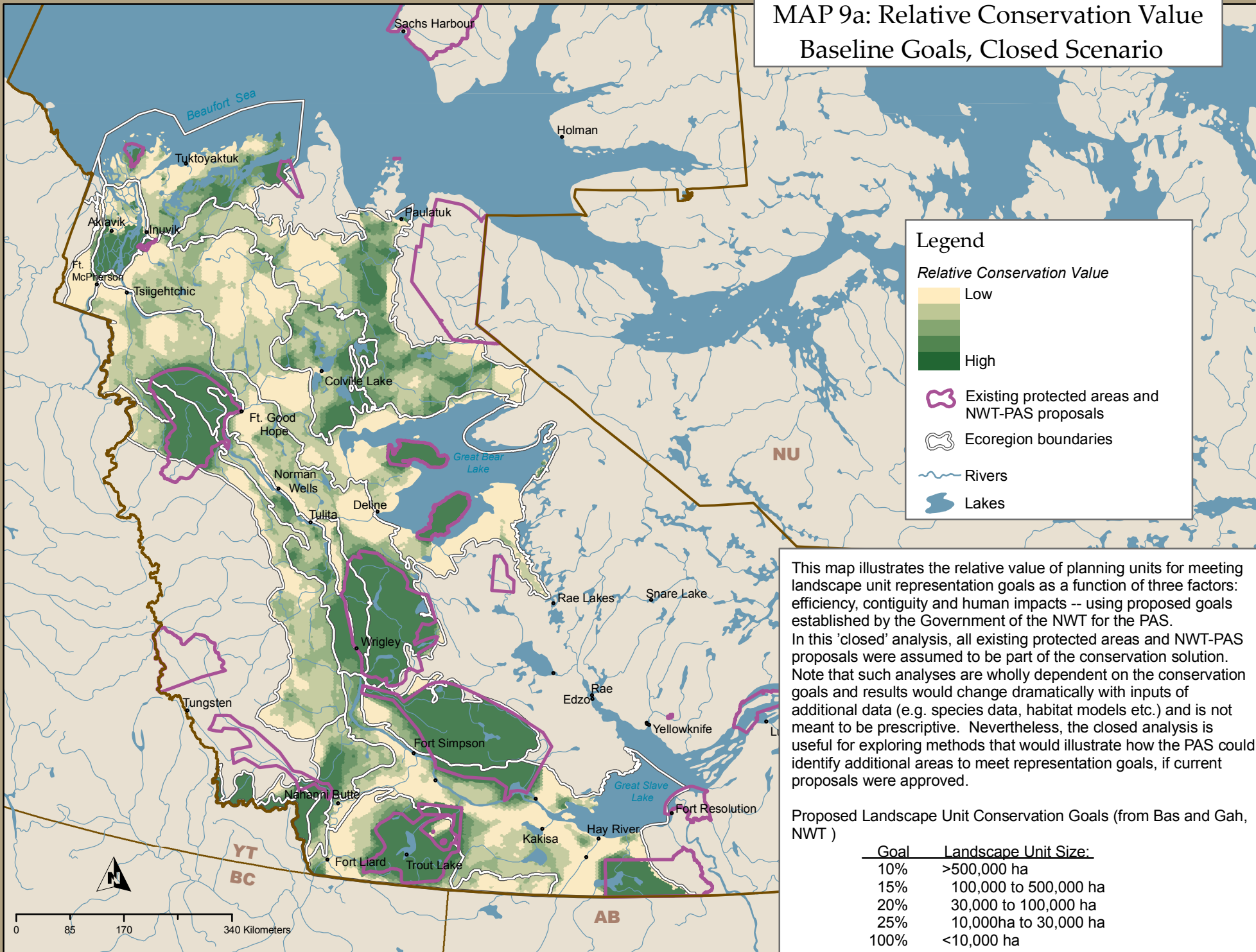


MAP 9a: Relative Conservation Value  
Baseline Goals, Closed Scenario



**Legend**

*Relative Conservation Value*

- Low
- 
- 
- 
- High

- Existing protected areas and NWT-PAS proposals
- Ecoregion boundaries
- Rivers
- Lakes

This map illustrates the relative value of planning units for meeting landscape unit representation goals as a function of three factors: efficiency, contiguity and human impacts -- using proposed goals established by the Government of the NWT for the PAS. In this 'closed' analysis, all existing protected areas and NWT-PAS proposals were assumed to be part of the conservation solution. Note that such analyses are wholly dependent on the conservation goals and results would change dramatically with inputs of additional data (e.g. species data, habitat models etc.) and is not meant to be prescriptive. Nevertheless, the closed analysis is useful for exploring methods that would illustrate how the PAS could identify additional areas to meet representation goals, if current proposals were approved.

Proposed Landscape Unit Conservation Goals (from Bas and Gah, NWT )

Goal	Landscape Unit Size:
10%	>500,000 ha
15%	100,000 to 500,000 ha
20%	30,000 to 100,000 ha
25%	10,000ha to 30,000 ha
100%	<10,000 ha

