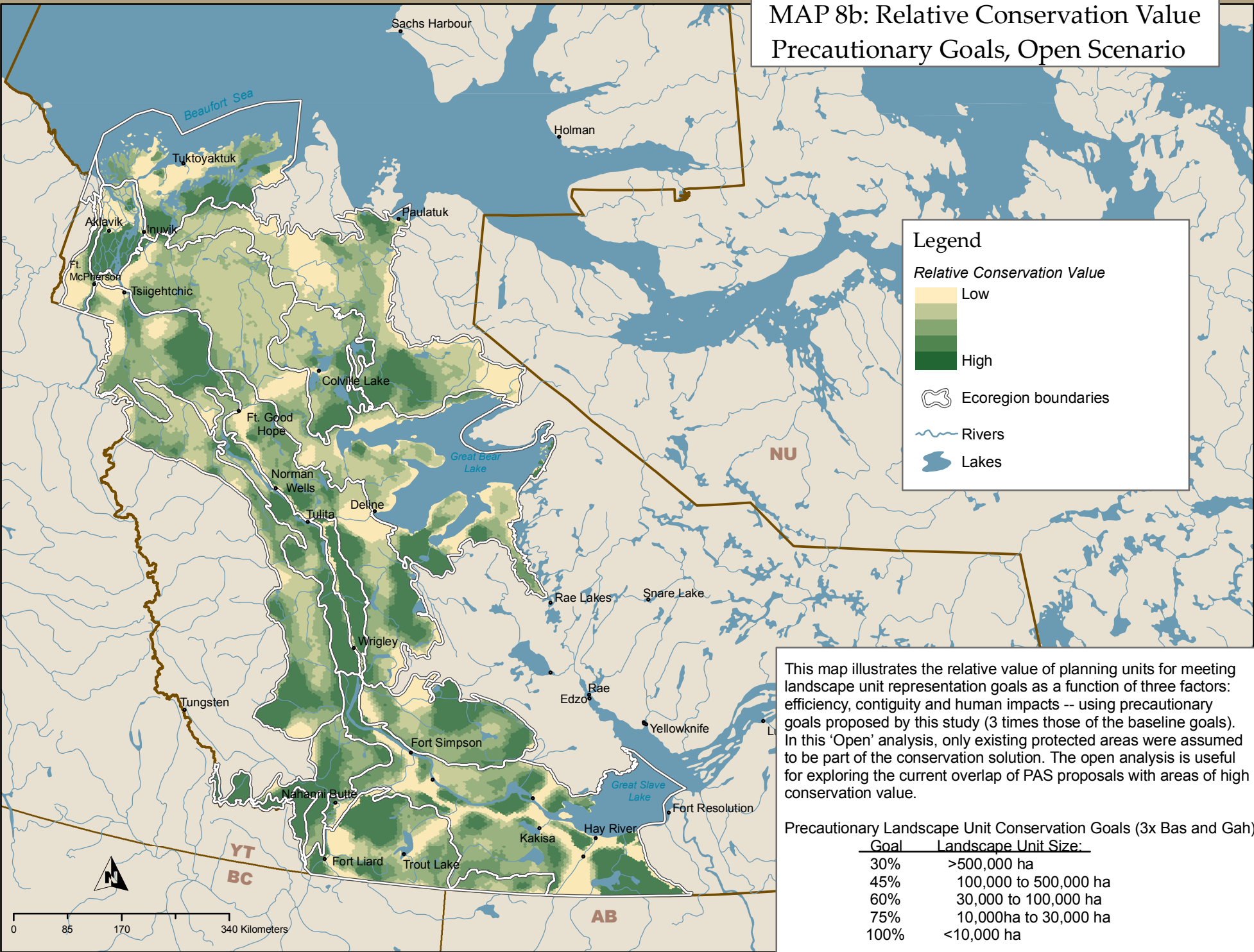


MAP 8b: Relative Conservation Value
Precautionary Goals, Open Scenario



Legend

Relative Conservation Value

- Low
-
-
-
- High

- Ecoregion boundaries
- Rivers
- Lakes

This map illustrates the relative value of planning units for meeting landscape unit representation goals as a function of three factors: efficiency, contiguity and human impacts -- using precautionary goals proposed by this study (3 times those of the baseline goals). In this 'Open' analysis, only existing protected areas were assumed to be part of the conservation solution. The open analysis is useful for exploring the current overlap of PAS proposals with areas of high conservation value.

Precautionary Landscape Unit Conservation Goals (3x Bas and Gah)

Goal	Landscape Unit Size:
30%	>500,000 ha
45%	100,000 to 500,000 ha
60%	30,000 to 100,000 ha
75%	10,000ha to 30,000 ha
100%	<10,000 ha