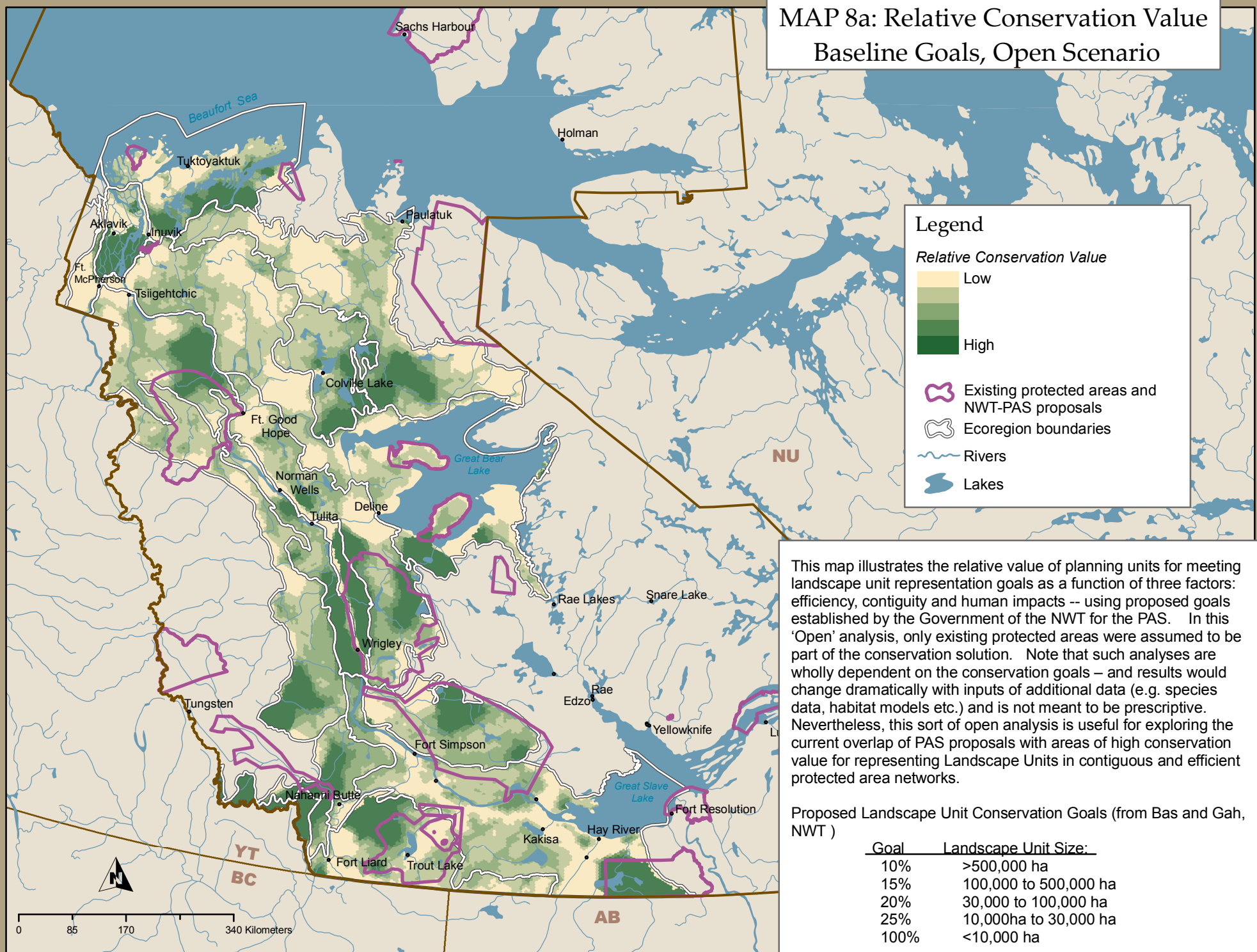


**MAP 8a: Relative Conservation Value
Baseline Goals, Open Scenario**



Legend

Relative Conservation Value

- Low
-
-
-
- High

- Existing protected areas and NWT-PAS proposals
- Ecoregion boundaries
- Rivers
- Lakes

This map illustrates the relative value of planning units for meeting landscape unit representation goals as a function of three factors: efficiency, contiguity and human impacts -- using proposed goals established by the Government of the NWT for the PAS. In this 'Open' analysis, only existing protected areas were assumed to be part of the conservation solution. Note that such analyses are wholly dependent on the conservation goals -- and results would change dramatically with inputs of additional data (e.g. species data, habitat models etc.) and is not meant to be prescriptive. Nevertheless, this sort of open analysis is useful for exploring the current overlap of PAS proposals with areas of high conservation value for representing Landscape Units in contiguous and efficient protected area networks.

Proposed Landscape Unit Conservation Goals (from Bas and Gah, NWT)

Goal	Landscape Unit Size:
10%	>500,000 ha
15%	100,000 to 500,000 ha
20%	30,000 to 100,000 ha
25%	10,000ha to 30,000 ha
100%	<10,000 ha

