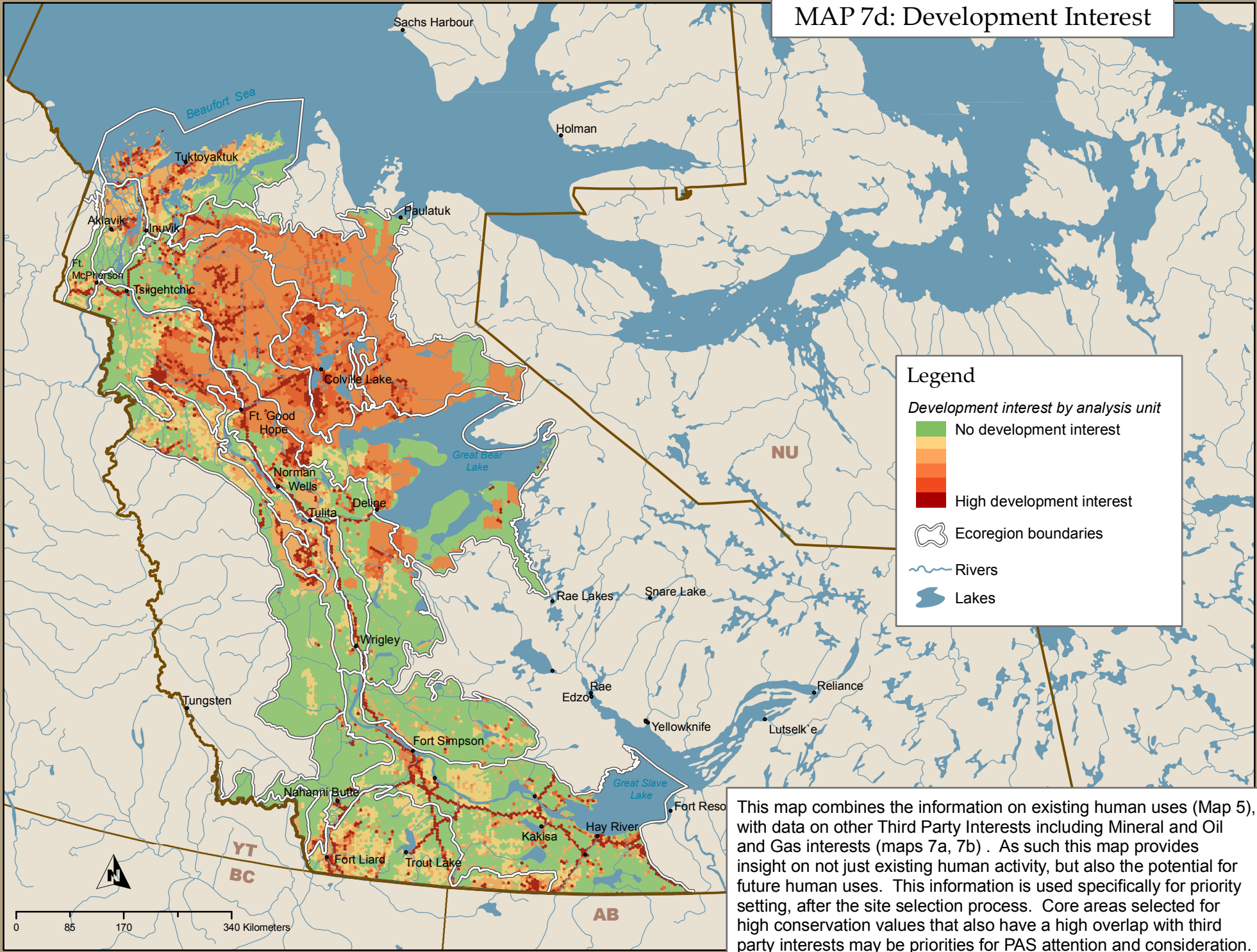


MAP 7d: Development Interest



This map combines the information on existing human uses (Map 5), with data on other Third Party Interests including Mineral and Oil and Gas interests (maps 7a, 7b). As such this map provides insight on not just existing human activity, but also the potential for future human uses. This information is used specifically for priority setting, after the site selection process. Core areas selected for high conservation values that also have a high overlap with third party interests may be priorities for PAS attention and consideration.