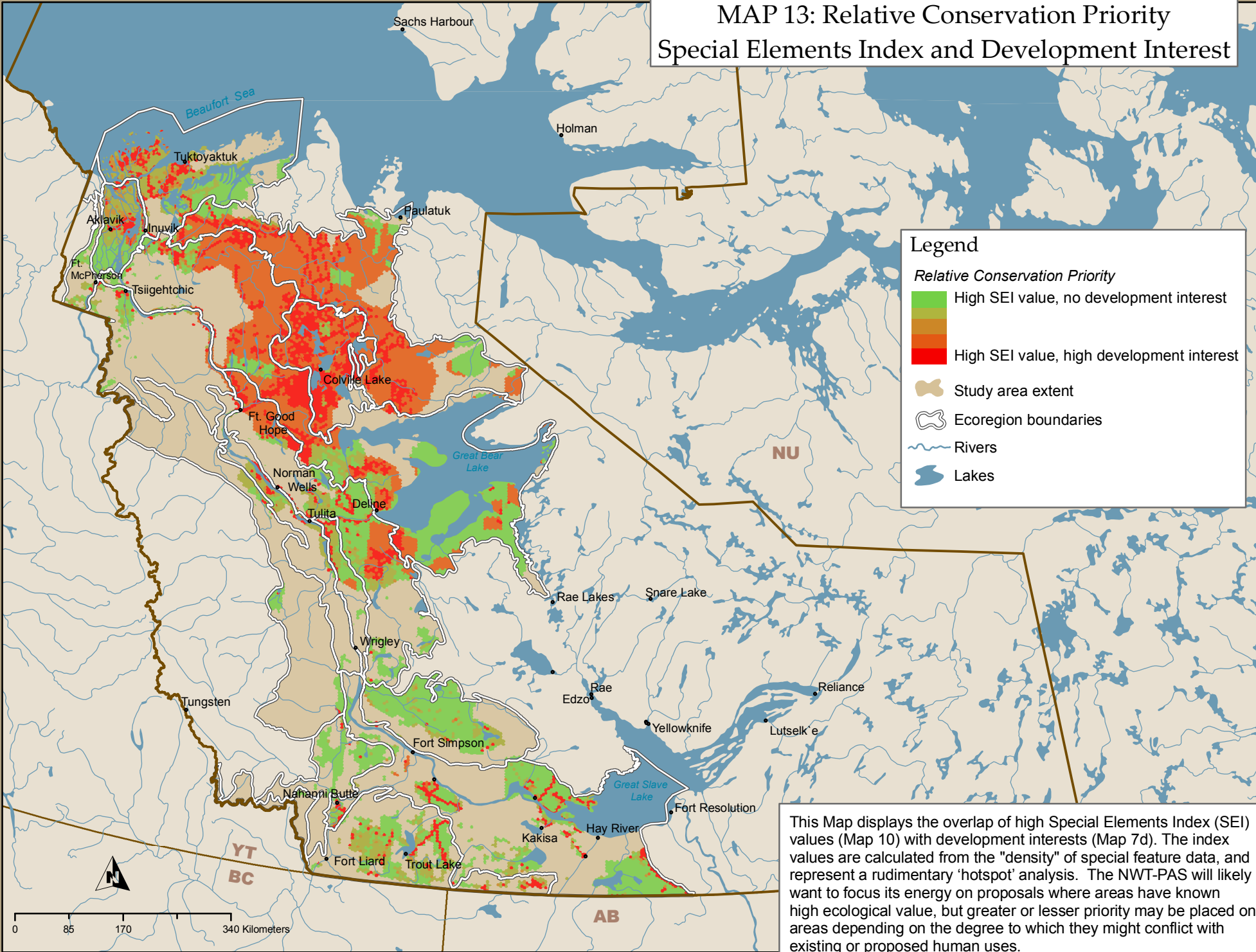


MAP 13: Relative Conservation Priority Special Elements Index and Development Interest



This Map displays the overlap of high Special Elements Index (SEI) values (Map 10) with development interests (Map 7d). The index values are calculated from the "density" of special feature data, and represent a rudimentary 'hotspot' analysis. The NWT-PAS will likely want to focus its energy on proposals where areas have known high ecological value, but greater or lesser priority may be placed on areas depending on the degree to which they might conflict with existing or proposed human uses.