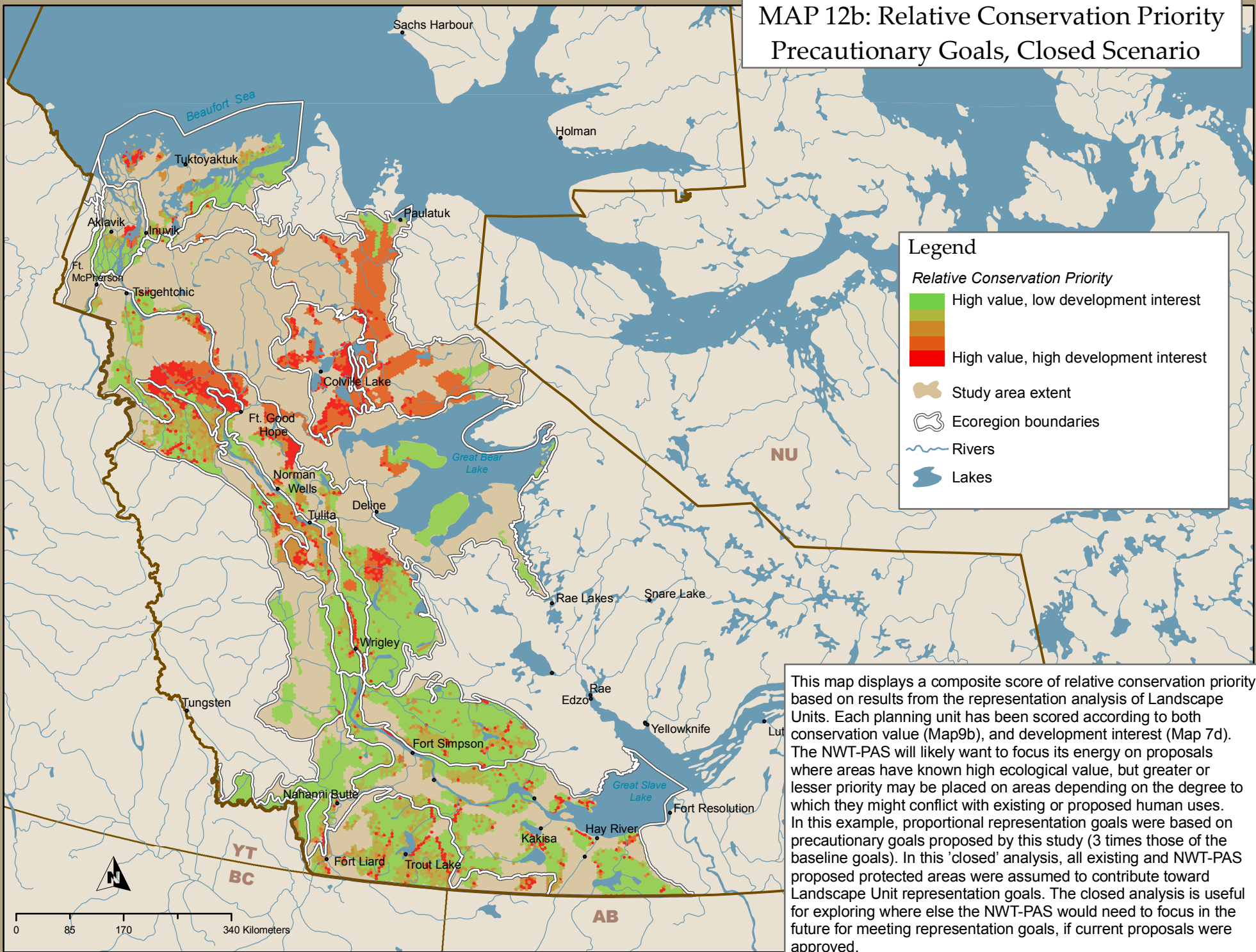


MAP 12b: Relative Conservation Priority  
Precautionary Goals, Closed Scenario



This map displays a composite score of relative conservation priority based on results from the representation analysis of Landscape Units. Each planning unit has been scored according to both conservation value (Map 9b), and development interest (Map 7d). The NWT-PAS will likely want to focus its energy on proposals where areas have known high ecological value, but greater or lesser priority may be placed on areas depending on the degree to which they might conflict with existing or proposed human uses. In this example, proportional representation goals were based on precautionary goals proposed by this study (3 times those of the baseline goals). In this 'closed' analysis, all existing and NWT-PAS proposed protected areas were assumed to contribute toward Landscape Unit representation goals. The closed analysis is useful for exploring where else the NWT-PAS would need to focus in the future for meeting representation goals, if current proposals were approved.