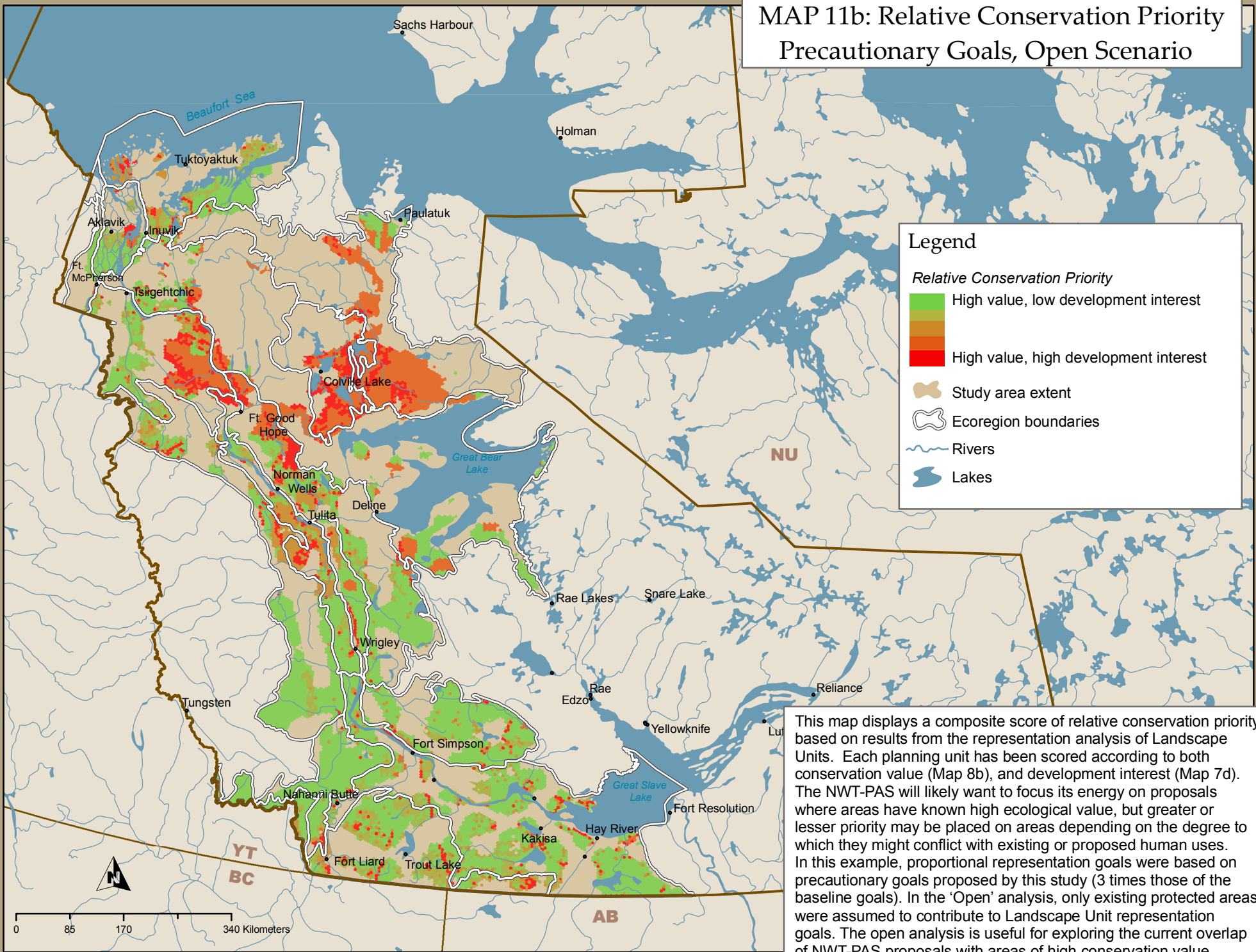


MAP 11b: Relative Conservation Priority
Precautionary Goals, Open Scenario



Legend

Relative Conservation Priority

- High value, low development interest
- High value, high development interest
- Study area extent
- Ecoregion boundaries
- Rivers
- Lakes

This map displays a composite score of relative conservation priority based on results from the representation analysis of Landscape Units. Each planning unit has been scored according to both conservation value (Map 8b), and development interest (Map 7d). The NWT-PAS will likely want to focus its energy on proposals where areas have known high ecological value, but greater or lesser priority may be placed on areas depending on the degree to which they might conflict with existing or proposed human uses. In this example, proportional representation goals were based on precautionary goals proposed by this study (3 times those of the baseline goals). In the 'Open' analysis, only existing protected areas were assumed to contribute to Landscape Unit representation goals. The open analysis is useful for exploring the current overlap of NWT-PAS proposals with areas of high conservation value.