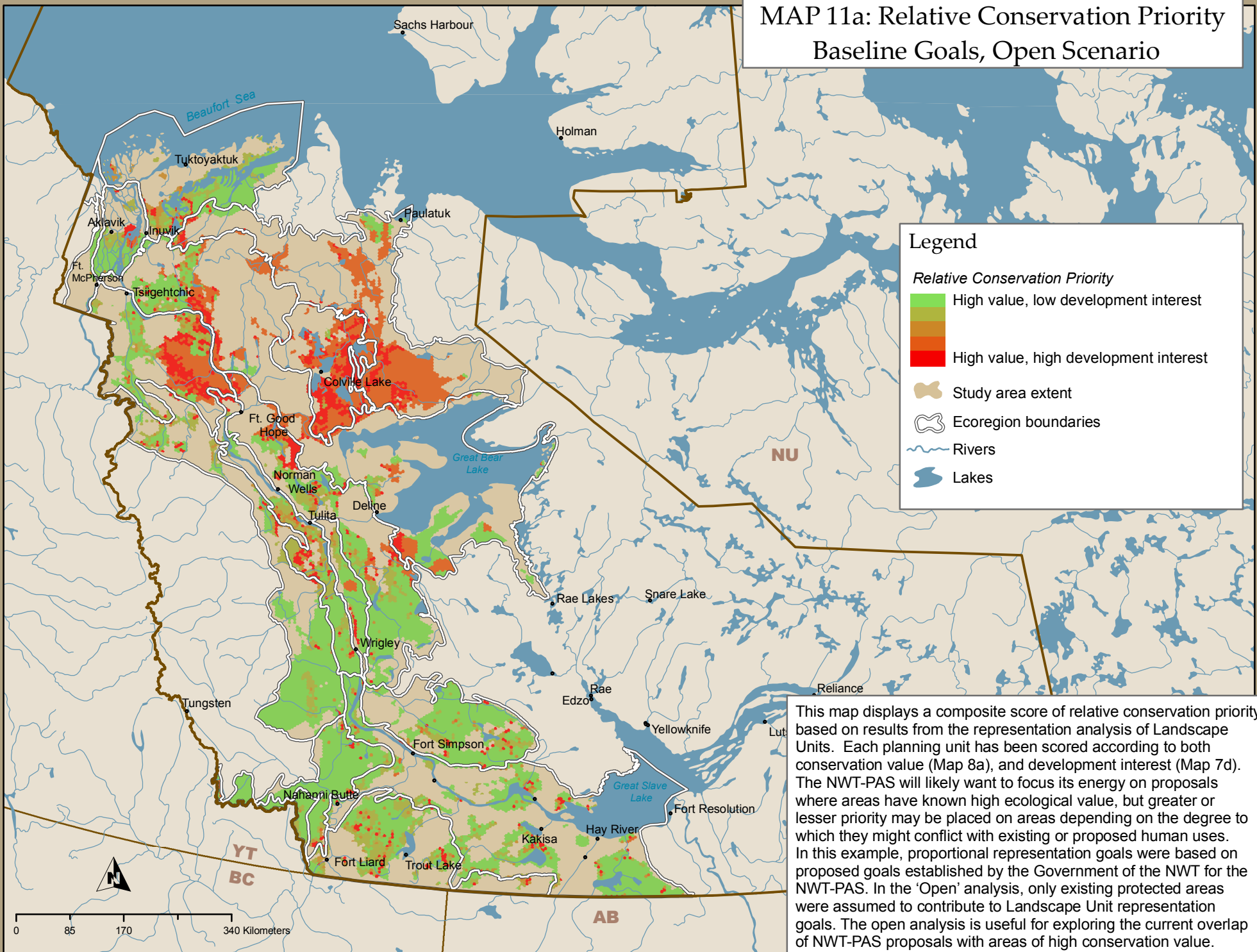


MAP 11a: Relative Conservation Priority
Baseline Goals, Open Scenario



This map displays a composite score of relative conservation priority based on results from the representation analysis of Landscape Units. Each planning unit has been scored according to both conservation value (Map 8a), and development interest (Map 7d). The NWT-PAS will likely want to focus its energy on proposals where areas have known high ecological value, but greater or lesser priority may be placed on areas depending on the degree to which they might conflict with existing or proposed human uses. In this example, proportional representation goals were based on proposed goals established by the Government of the NWT for the NWT-PAS. In the 'Open' analysis, only existing protected areas were assumed to contribute to Landscape Unit representation goals. The open analysis is useful for exploring the current overlap of NWT-PAS proposals with areas of high conservation value.