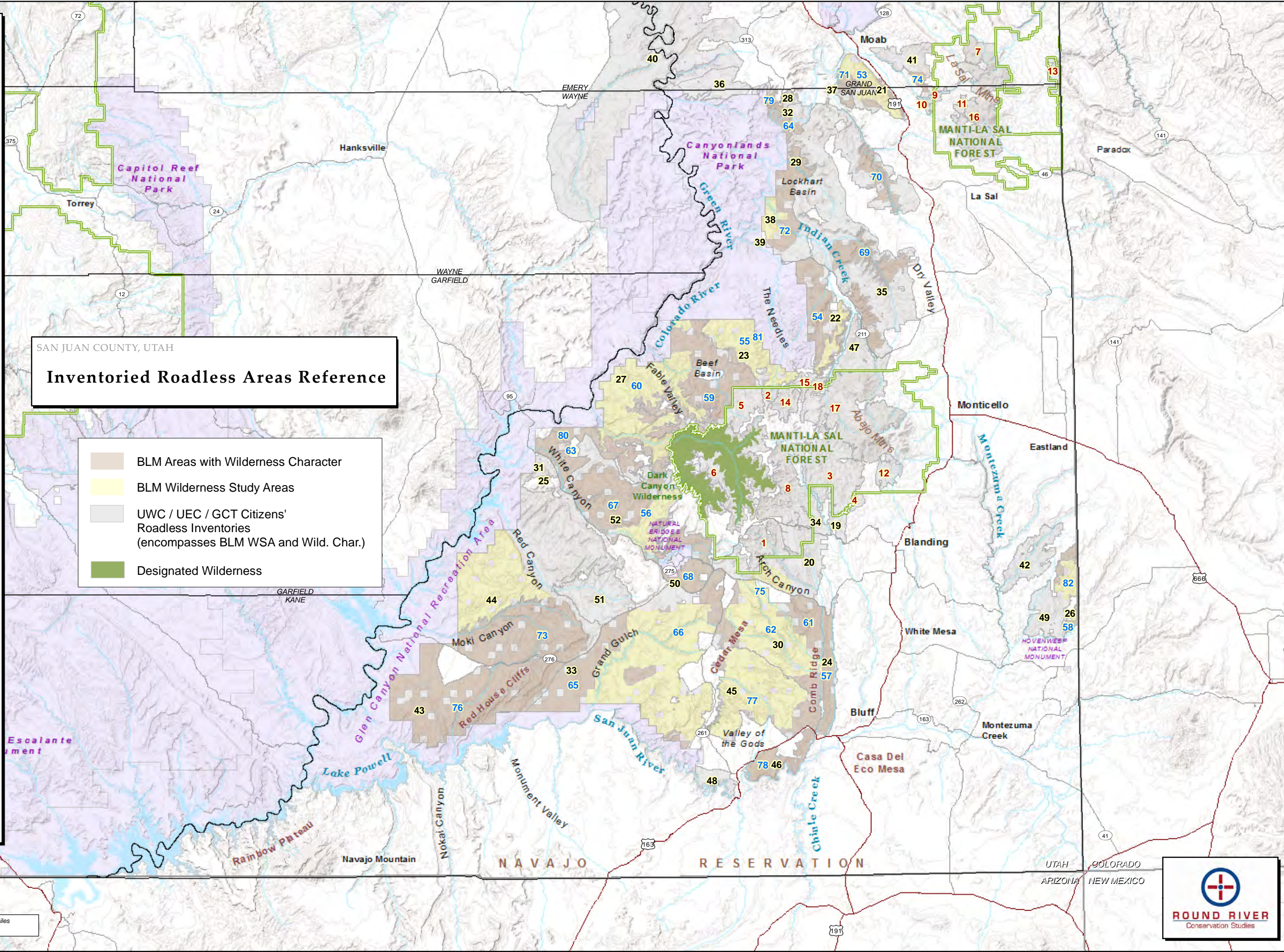


"MapCode"	UEC / GCT NAME
1	Arch Canyon
2	Butler Wash Extension
3	Chippean Ridge
4	Chippean Ridge (BLM)
5	Dark Canyon
6	Dark Canyon Extensions
7	Grand View/Mount Waas
8	Hammond/Notch Canyon
9	Mill Creek
10	Mill Creek (BLM)
11	Mount Peale
12	Recapture Creek
13	Roc Creek/Sinbad Ridge
14	Seven Sisters Buttes
15	Seven Sisters Buttes (BLM)
16	South Mountain
17	The Wilderness
18	The Wilderness (BLM)
UWC Name	
19	Allen Canyon
20	Arch Canyon
21	Behind the Rocks
22	Bridger Jack Mesa
23	Butler Wash
24	Comb Ridge
25	Copper Point
26	Cross Canyon
27	Dark Canyon
28	Dead Horse Cliffs
29	Demons Playground
30	Fish/Owl Creek Cyns
31	Fort Knocker
32	Gooseneck
33	Grand Gulch
34	Hammond Canyon
35	Hatch/Lockhart/Hart
36	Horsethief Point
37	Hunters Canyon
38	Indian Creek
39	Indian Creek Adj.
40	Labyrinth Canyon
41	Mill Creek
42	Monument Canyon
43	Nokai Dome
44	Red Rock Plateau
45	Road Canyon
46	San Juan River
47	Shay Mountain
48	The Tabernacle
49	Tin Cup Mesa
50	Tuwa Canyon
51	Upper Red Canyon
52	White Canyon
BLM Name	
53	Behind the Rocks
54	Bridger Jack Mesa
55	Butler Wash
56	Cheesebox Canyon
57	Comb Ridge
58	Cross Canyon
59	Dark Canyon
60	Dark Canyon ISA Complex
61	Fish and Owl Creeks
62	Fish Creek Canyon
63	Fort Knocker Canyon
64	Gooseneck
65	Grand Gulch
66	Grand Gulch ISA Complex
67	Gravel & Long Canyon
68	Harmony Flat
69	Harts Point
70	Hatch Wash
71	Hunter Canyon
72	Indian Creek
73	Mancos Mesa
74	Mill Creek Canyon
75	Mule Canyon
76	Nokai Dome
77	Road Canyon
78	San Juan River
79	Shafer Canyon
80	Sheep Canyon
81	South Needles
82	Squaw and Papoose Canyon

SAN JUAN COUNTY, UTAH

## Inventoried Roadless Areas Reference

- BLM Areas with Wilderness Character
- BLM Wilderness Study Areas
- UWC / UEC / GCT Citizens' Roadless Inventories (encompasses BLM WSA and Wild. Char.)
- Designated Wilderness





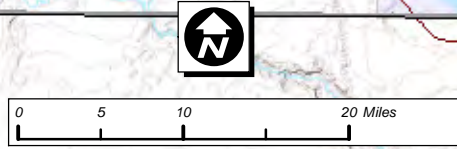
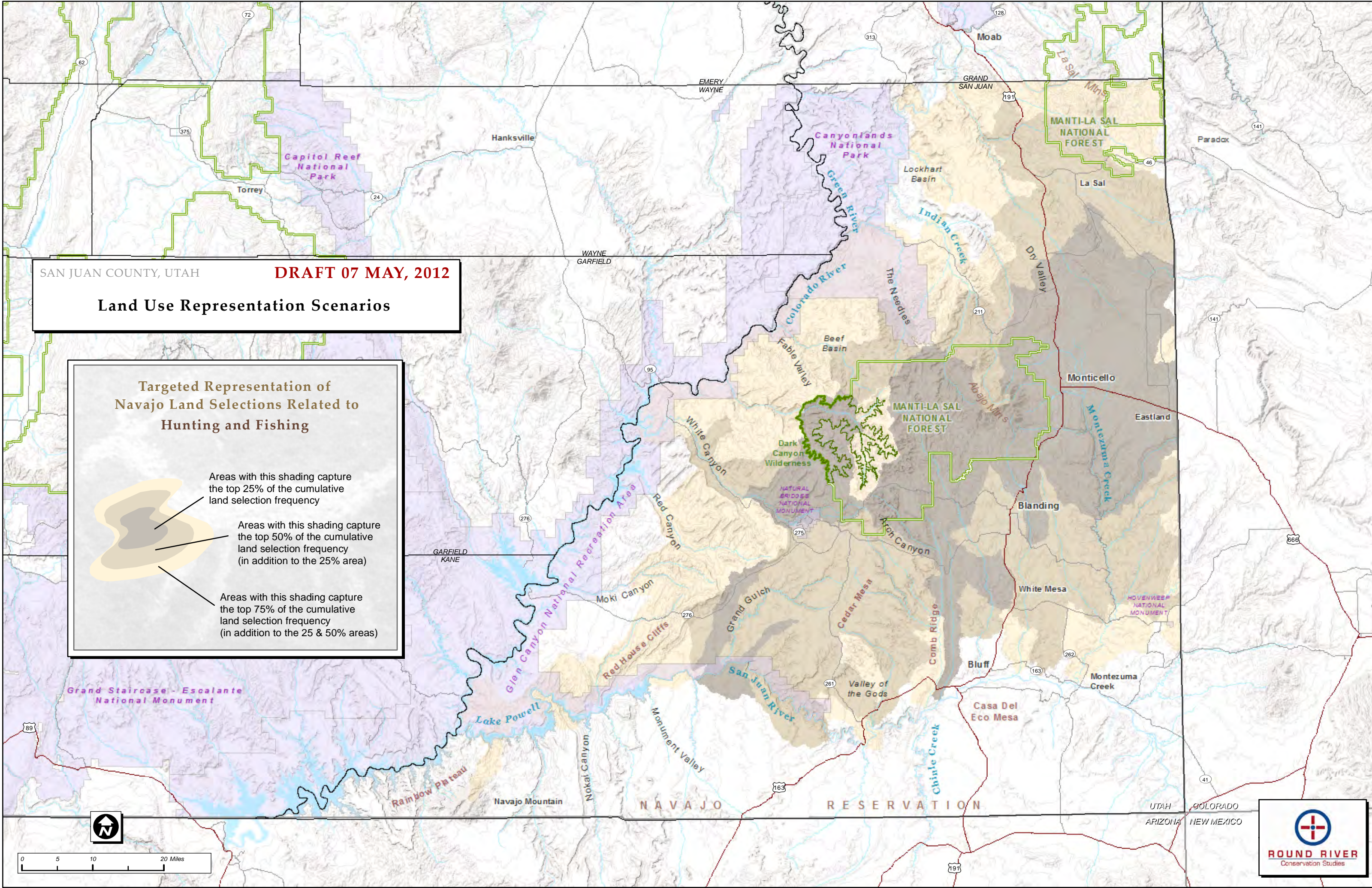
SAN JUAN COUNTY, UTAH

**DRAFT 07 MAY, 2012**

**Land Use Representation Scenarios**

**Targeted Representation of Navajo Land Selections Related to Hunting and Fishing**

- Areas with this shading capture the top 25% of the cumulative land selection frequency
- Areas with this shading capture the top 50% of the cumulative land selection frequency (in addition to the 25% area)
- Areas with this shading capture the top 75% of the cumulative land selection frequency (in addition to the 25 & 50% areas)



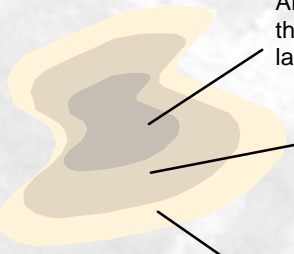


SAN JUAN COUNTY, UTAH

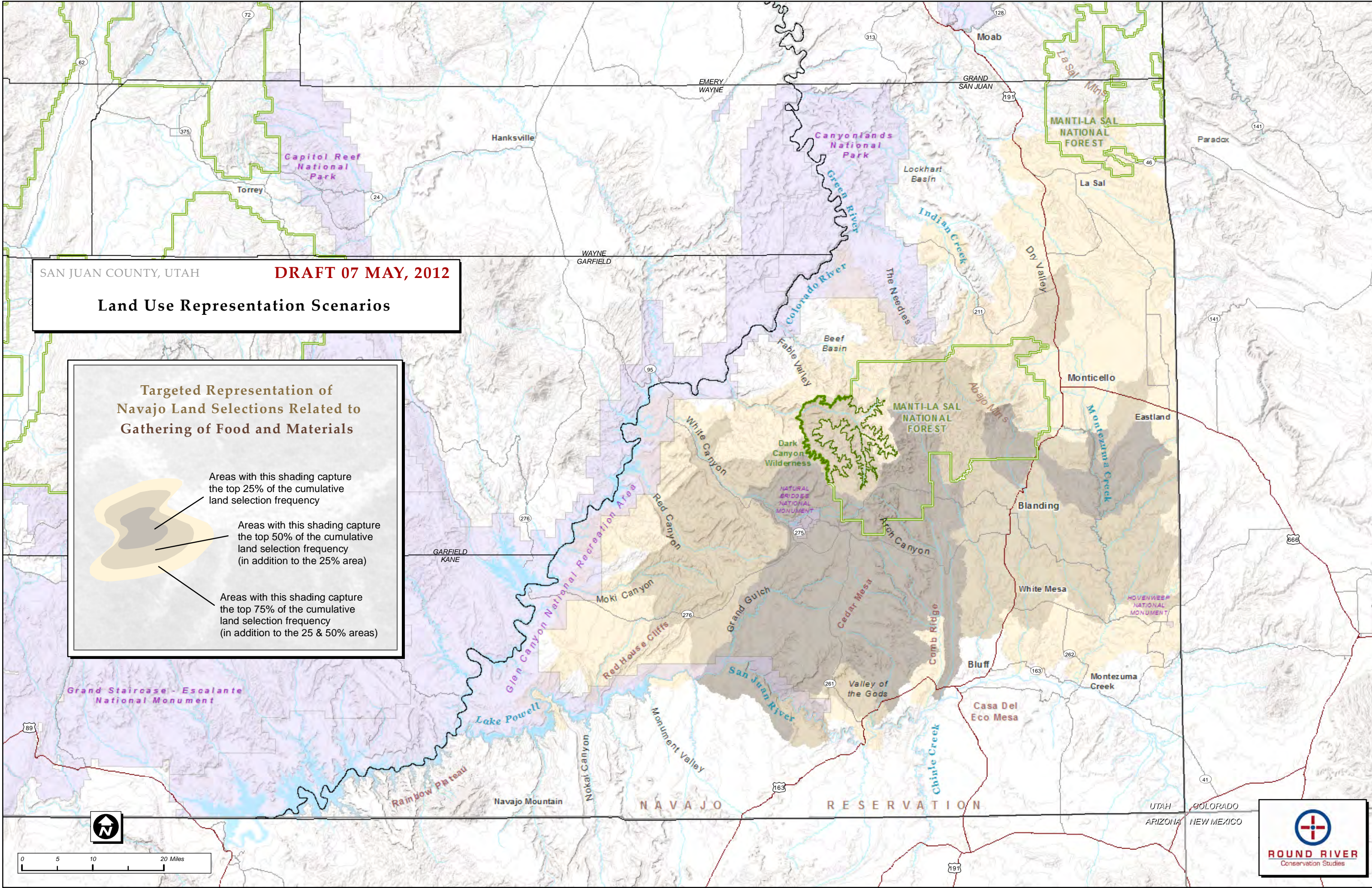
**DRAFT 07 MAY, 2012**

**Land Use Representation Scenarios**

**Targeted Representation of Navajo Land Selections Related to Gathering of Food and Materials**



- Areas with this shading capture the top 25% of the cumulative land selection frequency
- Areas with this shading capture the top 50% of the cumulative land selection frequency (in addition to the 25% area)
- Areas with this shading capture the top 75% of the cumulative land selection frequency (in addition to the 25 & 50% areas)



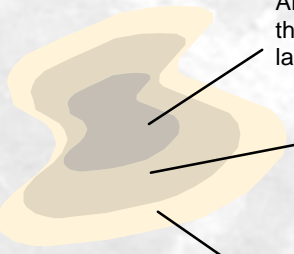


SAN JUAN COUNTY, UTAH

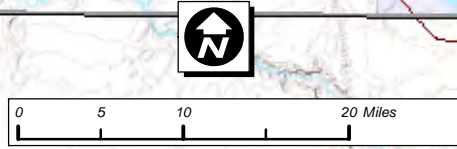
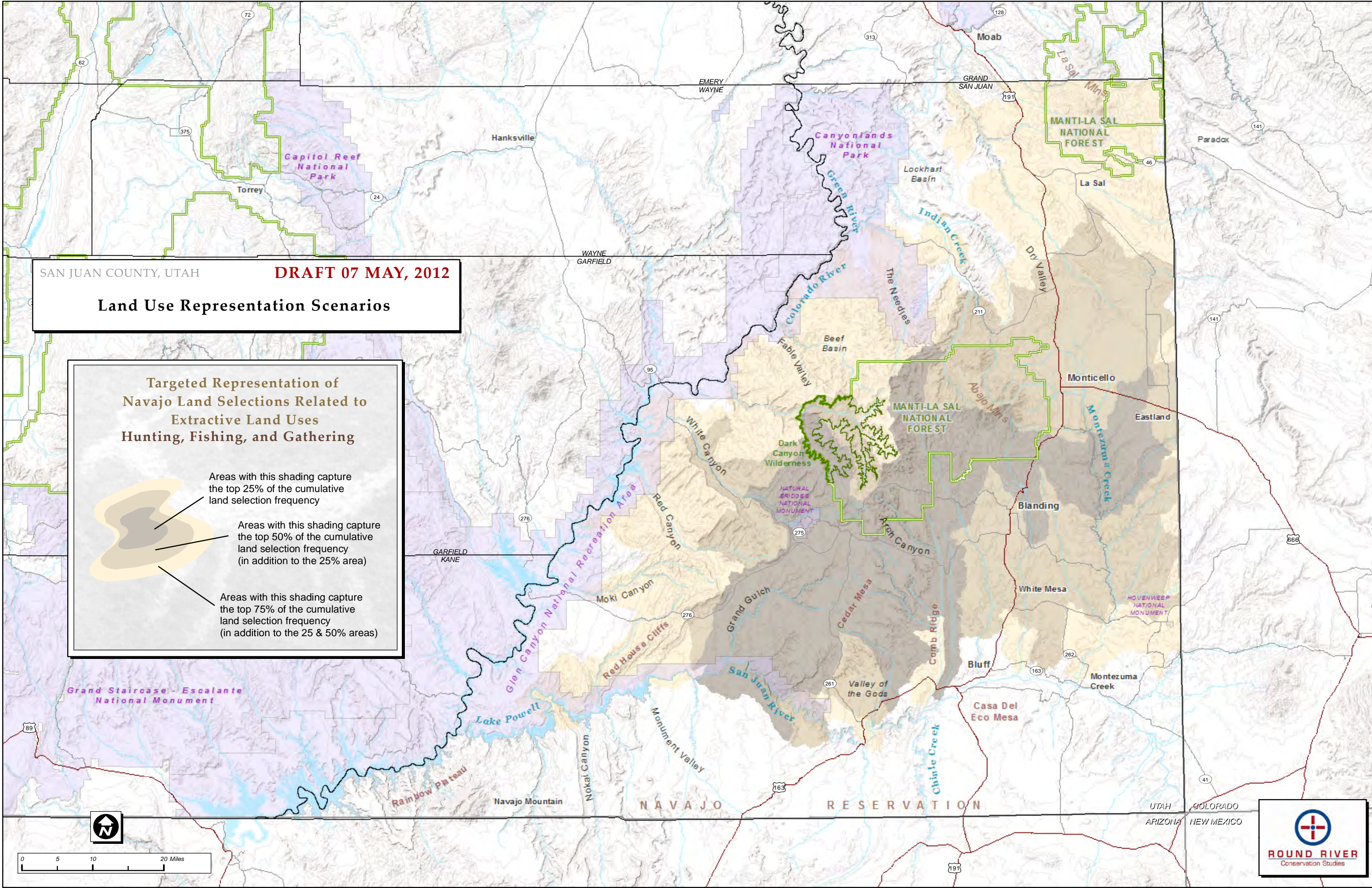
**DRAFT 07 MAY, 2012**

**Land Use Representation Scenarios**

**Targeted Representation of Navajo Land Selections Related to Extractive Land Uses Hunting, Fishing, and Gathering**



- Areas with this shading capture the top 25% of the cumulative land selection frequency
- Areas with this shading capture the top 50% of the cumulative land selection frequency (in addition to the 25% area)
- Areas with this shading capture the top 75% of the cumulative land selection frequency (in addition to the 25 & 50% areas)





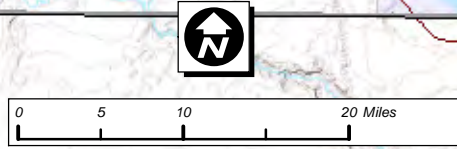
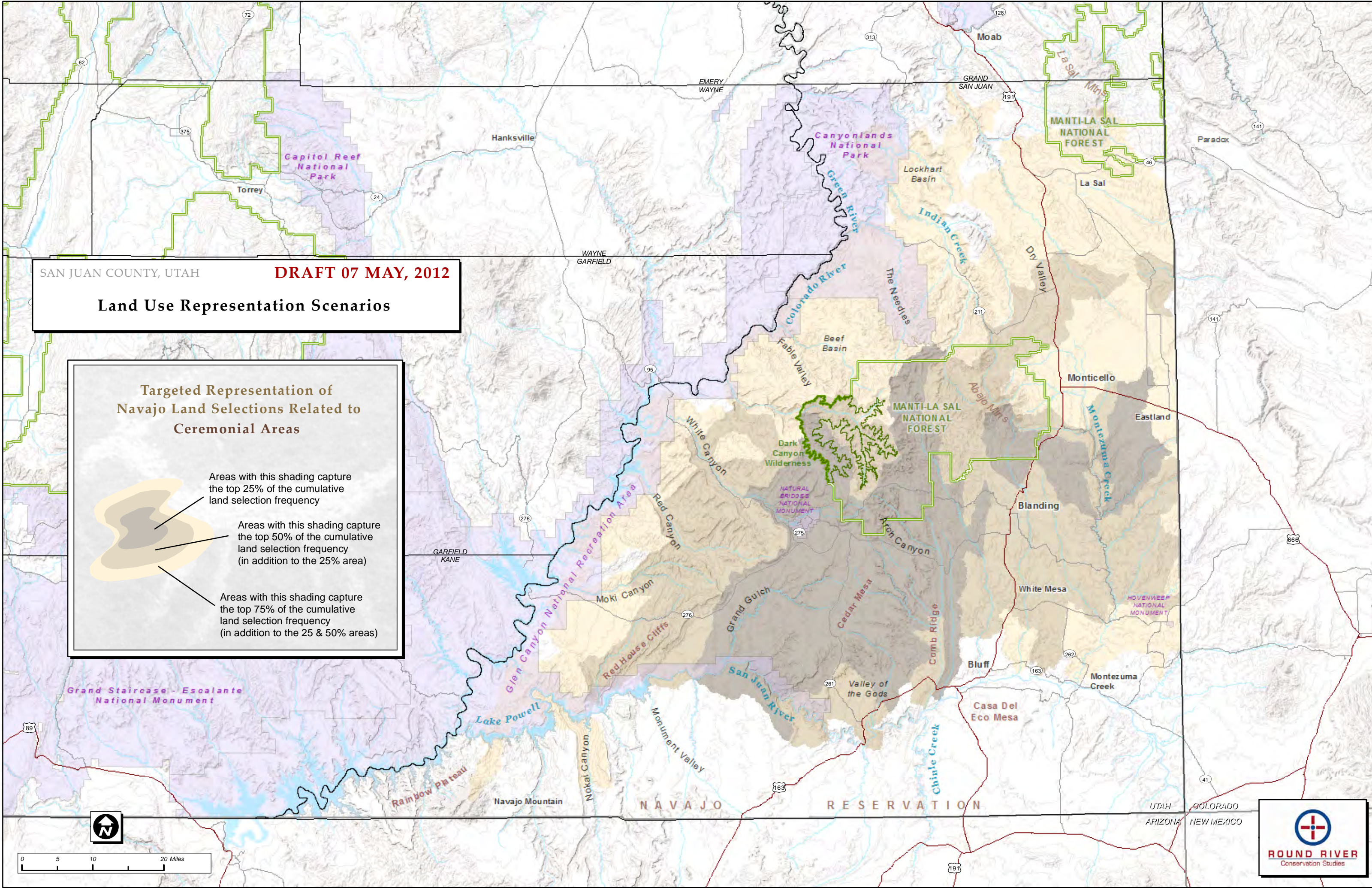
SAN JUAN COUNTY, UTAH

**DRAFT 07 MAY, 2012**

**Land Use Representation Scenarios**

**Targeted Representation of Navajo Land Selections Related to Ceremonial Areas**

- Areas with this shading capture the top 25% of the cumulative land selection frequency
- Areas with this shading capture the top 50% of the cumulative land selection frequency (in addition to the 25% area)
- Areas with this shading capture the top 75% of the cumulative land selection frequency (in addition to the 25% & 50% areas)



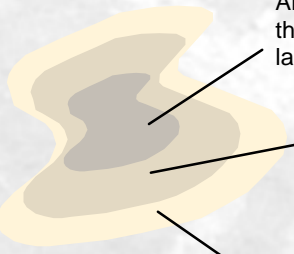


SAN JUAN COUNTY, UTAH

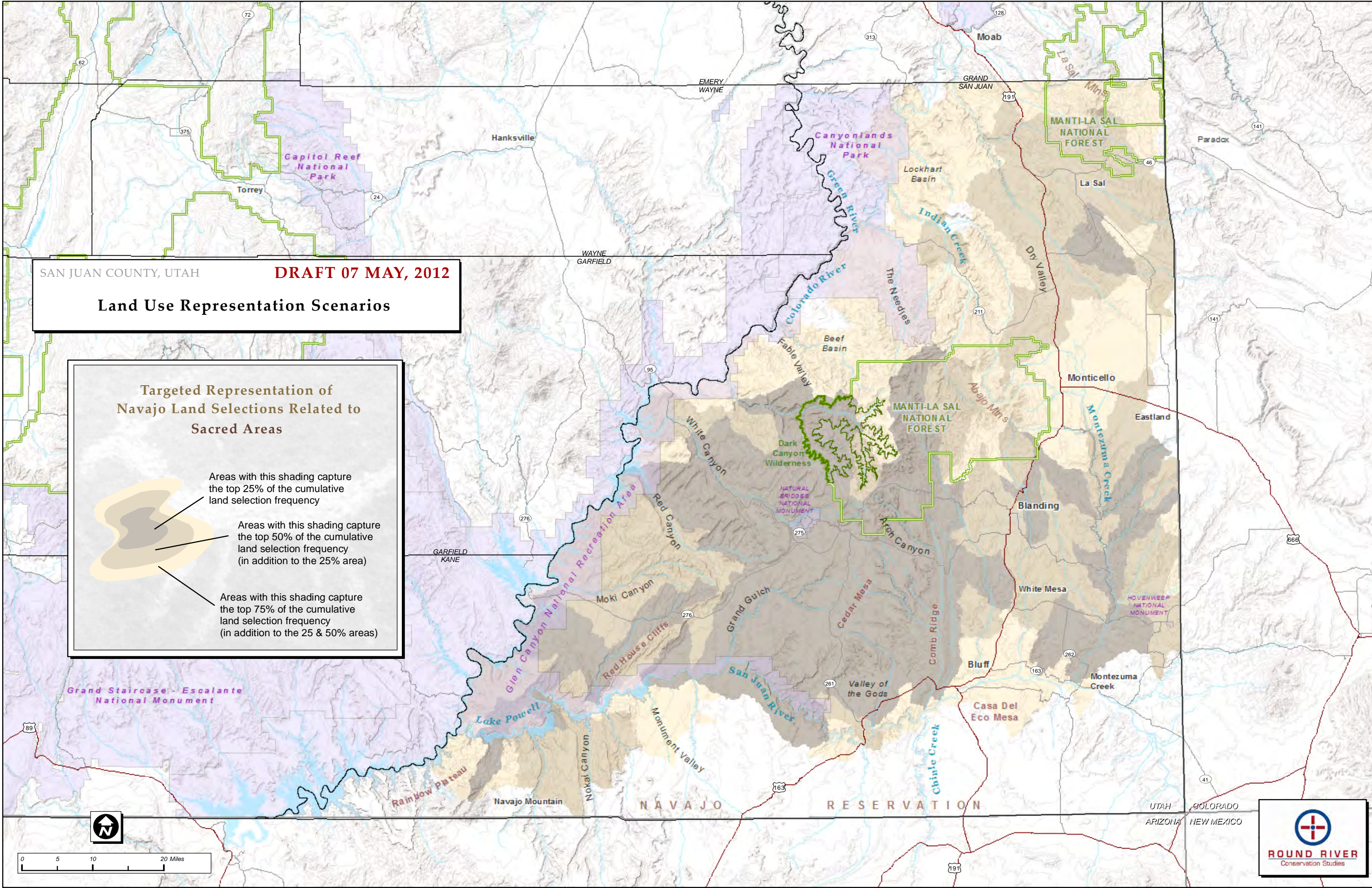
**DRAFT 07 MAY, 2012**

**Land Use Representation Scenarios**

**Targeted Representation of Navajo Land Selections Related to Sacred Areas**



- Areas with this shading capture the top 25% of the cumulative land selection frequency
- Areas with this shading capture the top 50% of the cumulative land selection frequency (in addition to the 25% area)
- Areas with this shading capture the top 75% of the cumulative land selection frequency (in addition to the 25 & 50% areas)



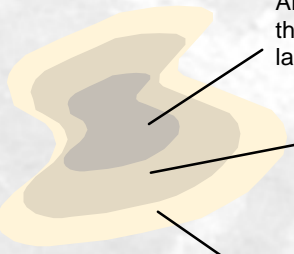


SAN JUAN COUNTY, UTAH

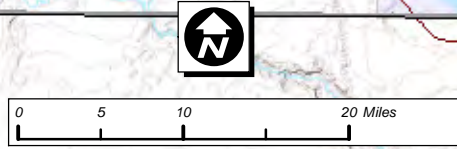
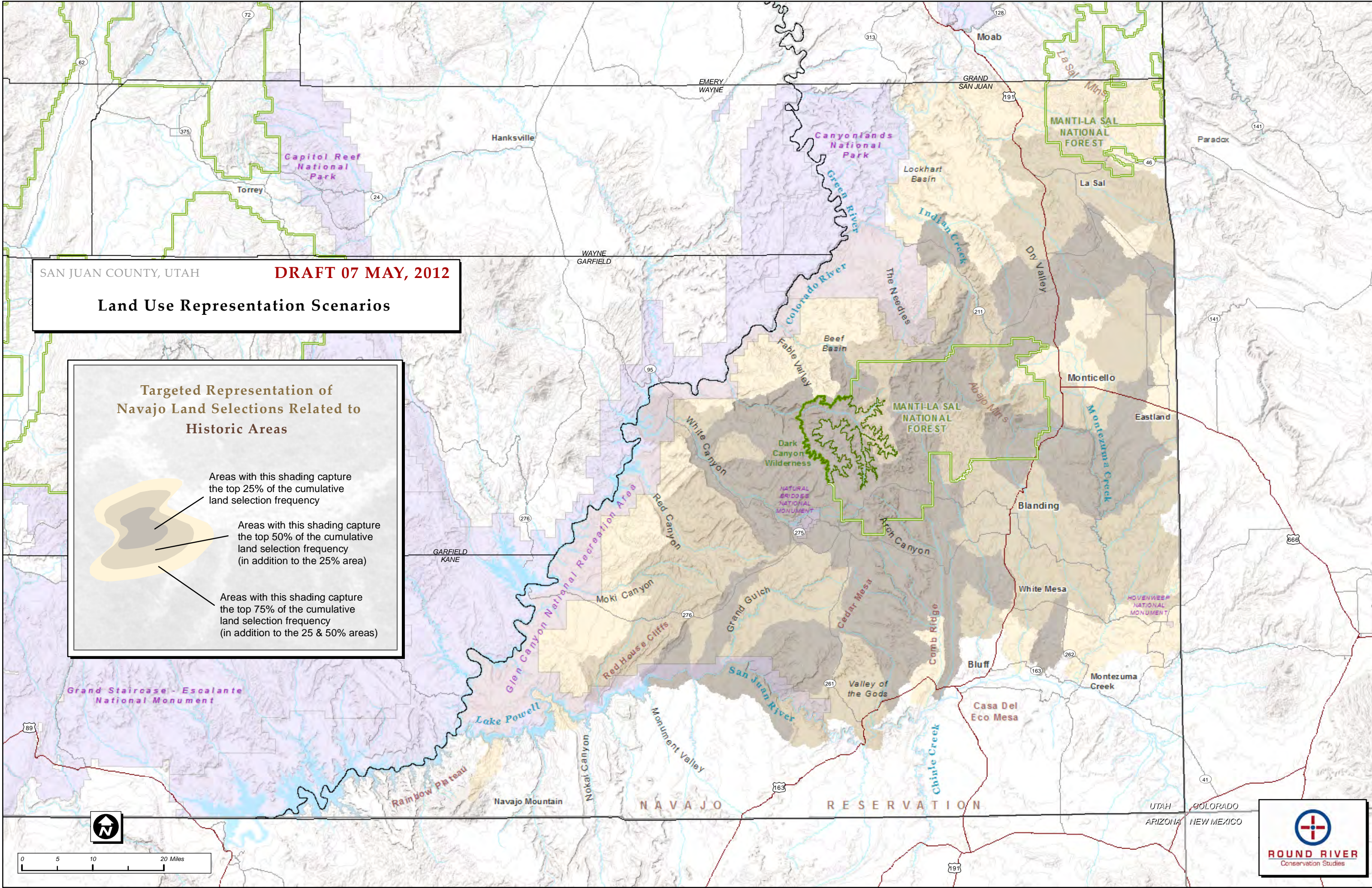
**DRAFT 07 MAY, 2012**

**Land Use Representation Scenarios**

**Targeted Representation of Navajo Land Selections Related to Historic Areas**



- Areas with this shading capture the top 25% of the cumulative land selection frequency
- Areas with this shading capture the top 50% of the cumulative land selection frequency (in addition to the 25% area)
- Areas with this shading capture the top 75% of the cumulative land selection frequency (in addition to the 25 & 50% areas)



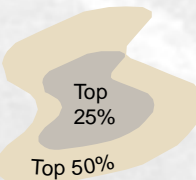


SAN JUAN COUNTY, UTAH

**DRAFT 07 MAY, 2012**

**Land Use Representation Scenarios**

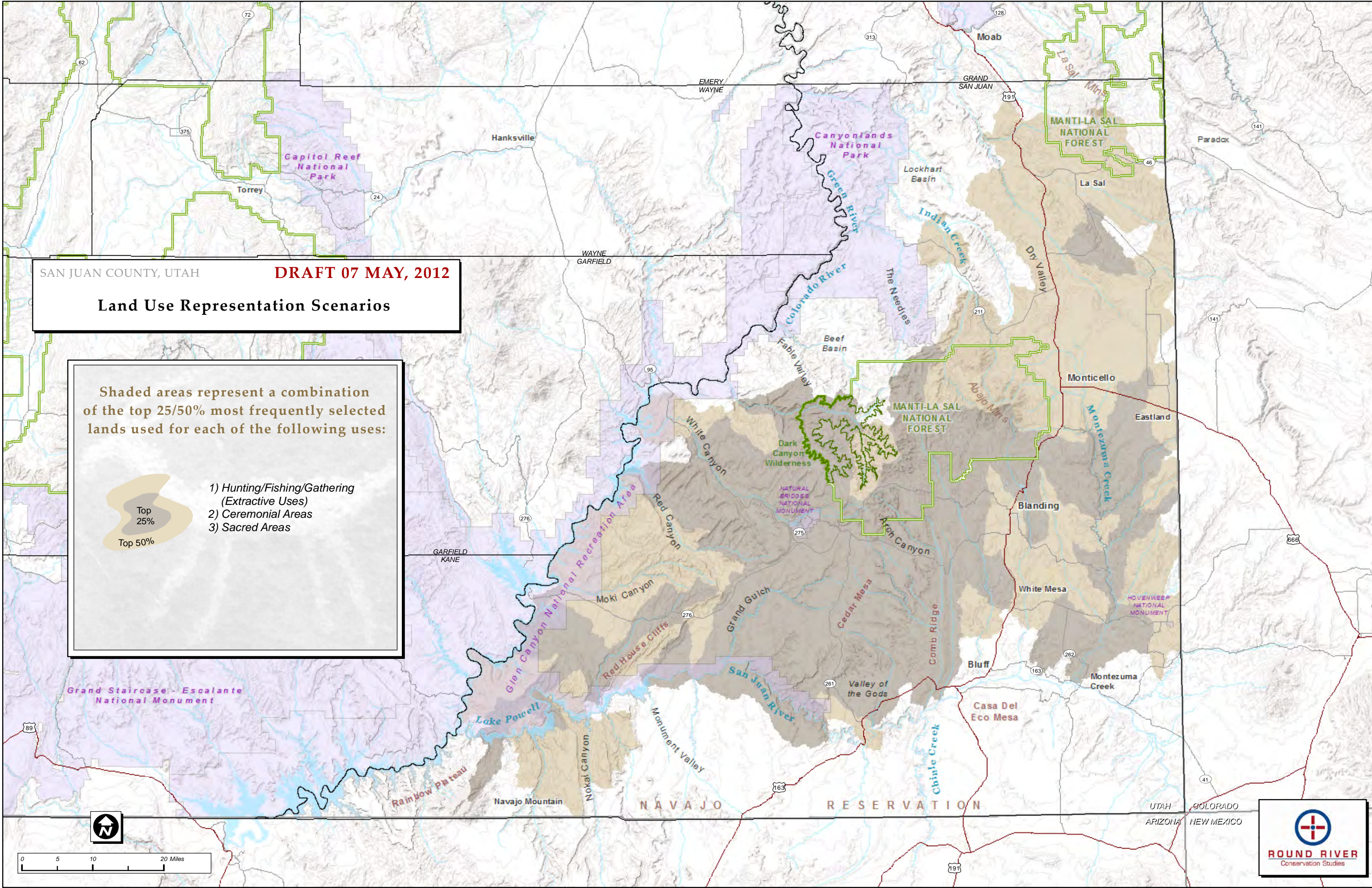
Shaded areas represent a combination of the top 25/50% most frequently selected lands used for each of the following uses:



Top 25%

Top 50%

- 1) Hunting/Fishing/Gathering (Extractive Uses)
- 2) Ceremonial Areas
- 3) Sacred Areas



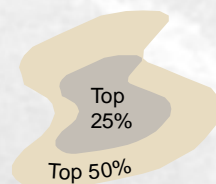


SAN JUAN COUNTY, UTAH

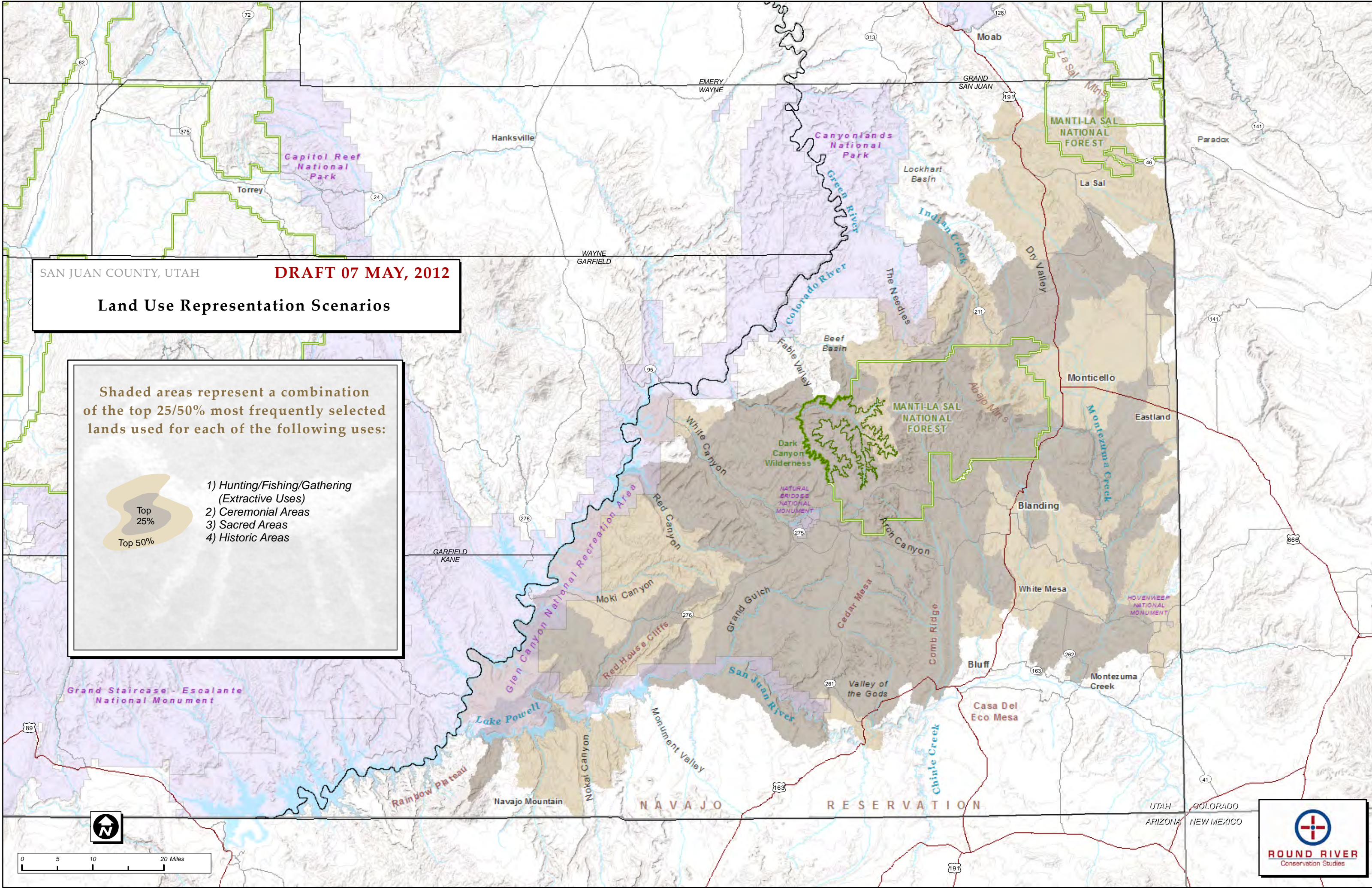
**DRAFT 07 MAY, 2012**

**Land Use Representation Scenarios**

Shaded areas represent a combination of the top 25/50% most frequently selected lands used for each of the following uses:



- 1) Hunting/Fishing/Gathering (Extractive Uses)
- 2) Ceremonial Areas
- 3) Sacred Areas
- 4) Historic Areas



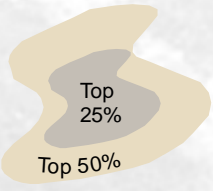


SAN JUAN COUNTY, UTAH

**DRAFT 07 MAY, 2012**


**Land Use Representation Scenarios**

Shaded areas represent a combination of the top 25/50% most frequently selected lands used for each of the following uses:

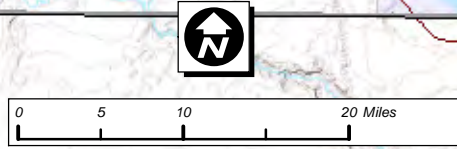
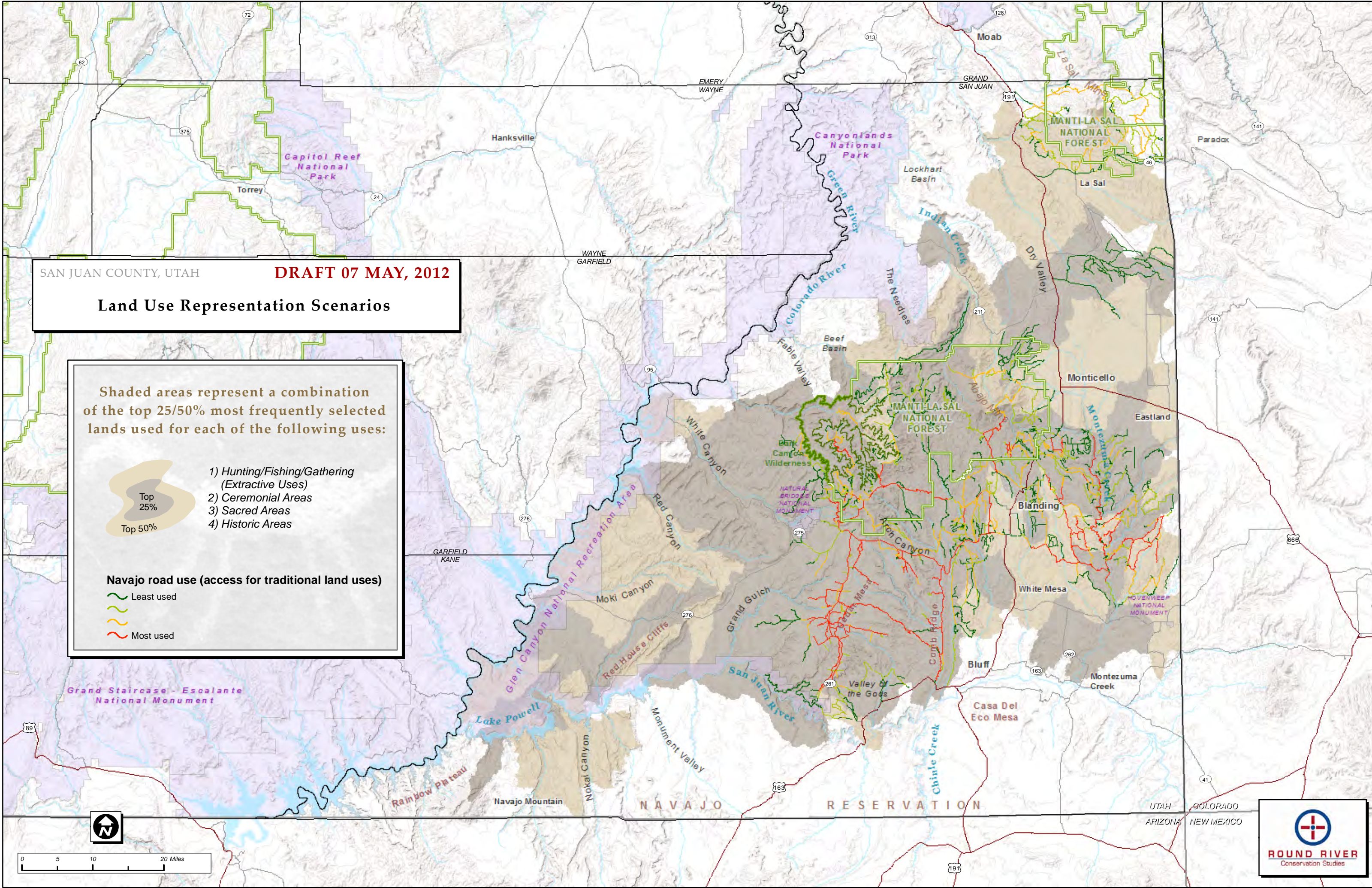


- 1) Hunting/Fishing/Gathering (Extractive Uses)
- 2) Ceremonial Areas
- 3) Sacred Areas
- 4) Historic Areas

Navajo road use (access for traditional land uses)



- Least used
- Most used



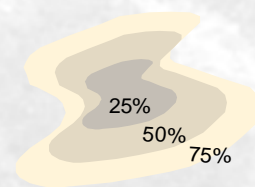


SAN JUAN COUNTY, UTAH

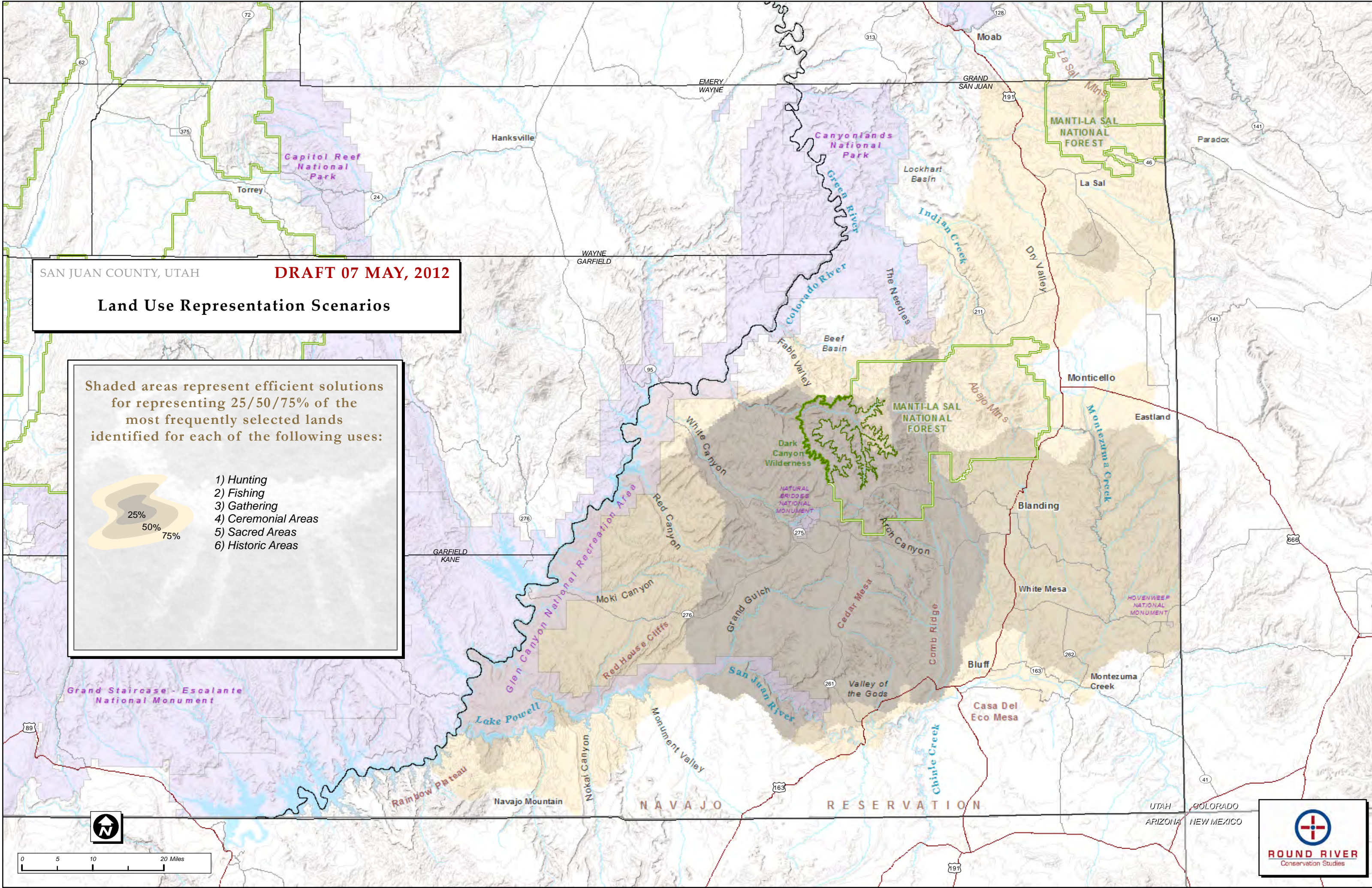
**DRAFT 07 MAY, 2012**

**Land Use Representation Scenarios**

Shaded areas represent efficient solutions for representing 25/50/75% of the most frequently selected lands identified for each of the following uses:



- 1) Hunting
- 2) Fishing
- 3) Gathering
- 4) Ceremonial Areas
- 5) Sacred Areas
- 6) Historic Areas





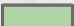
SAN JUAN COUNTY, UTAH

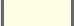


**DRAFT 10 MAY, 2012**

**"Crucial Habitat" Areas  
and Relative Need for Restoration Activities**

 Crucial Spring / Fall Habitat Areas  
for Mule Deer

**Landscape Departure**

 Most similar to reference condition  
(may need less restoration effort)

Least similar to reference condition  
(may need more restoration effort)


The **Landscape Departure** layer can be used to prioritize entire landscapes based on restoration need. Although useful for broad-level decisions at a landscape level, the Landscape Departure layer does not provide information about what may be "wrong" with a particular landscape in terms of succession class composition. Analyses at the succession class and strata (BpS) levels are more helpful for formulating restoration strategies. **-FRCCMT user guide**




SAN JUAN COUNTY, UTAH



**DRAFT 10 MAY, 2012**

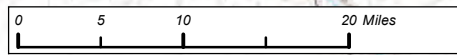
**"Crucial Habitat" Areas  
and Relative Need for Restoration Activities**

 Crucial Summer Habitat Areas  
for Mule Deer

**Landscape Departure**

 Most similar to reference condition  
(may need less restoration effort)

  Least similar to reference condition  
(may need more restoration effort)



The **Landscape Departure** layer can be used to prioritize entire landscapes based on restoration need. Although useful for broad-level decisions at a landscape level, the Landscape Departure layer does not provide information about what may be "wrong" with a particular landscape in terms of succession class composition. Analyses at the succession class and strata (BpS) levels are more helpful for formulating restoration strategies. **-FRCCMT user guide**






SAN JUAN COUNTY, UTAH



**DRAFT 10 MAY, 2012**

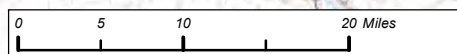
**"Crucial Habitat" Areas  
and Relative Need for Restoration Activities**

 Crucial Winter Habitat Areas  
for Mule Deer

**Landscape Departure**

 Most similar to reference condition  
(may need less restoration effort)

  Least similar to reference condition  
(may need more restoration effort)




The **Landscape Departure** layer can be used to prioritize entire landscapes based on restoration need. Although useful for broad-level decisions at a landscape level, the Landscape Departure layer does not provide information about what may be "wrong" with a particular landscape in terms of succession class composition. Analyses at the succession class and strata (BpS) levels are more helpful for formulating restoration strategies. -FRCCMT user guide



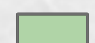
SAN JUAN COUNTY, UTAH


**DRAFT 10 MAY, 2012**


**"Crucial Habitat" Areas  
and Relative Need for Restoration Activities**

 Crucial Year Long Habitat Areas  
for Mule Deer

**Landscape Departure**

 Most similar to reference condition  
(may need less restoration effort)



 Least similar to reference condition  
(may need more restoration effort)

The **Landscape Departure** layer can be used to prioritize entire landscapes based on restoration need. Although useful for broad-level decisions at a landscape level, the Landscape Departure layer does not provide information about what may be "wrong" with a particular landscape in terms of succession class composition. Analyses at the succession class and strata (BpS) levels are more helpful for formulating restoration strategies. -FRCCMT user guide






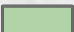
SAN JUAN COUNTY, UTAH



**DRAFT 10 MAY, 2012**

**"Crucial Habitat" Areas  
and Relative Need for Restoration Activities**

 Crucial Spring / Fall Habitat Areas  
for Rocky Mtn. Elk

**Landscape Departure**

 Most similar to reference condition  
(may need less restoration effort)

  Least similar to reference condition  
(may need more restoration effort)

The **Landscape Departure** layer can be used to prioritize entire landscapes based on restoration need. Although useful for broad-level decisions at a landscape level, the Landscape Departure layer does not provide information about what may be "wrong" with a particular landscape in terms of succession class composition. Analyses at the succession class and strata (BpS) levels are more helpful for formulating restoration strategies. -FRCCMT user guide









SAN JUAN COUNTY, UTAH

**DRAFT 10 MAY, 2012**

**"Crucial Habitat" Areas  
and Relative Need for Restoration Activities**

 Crucial Summer Habitat Areas  
for Rocky Mtn. Elk

**Landscape Departure**

-  Most similar to reference condition  
(may need less restoration effort)
- 
-  Least similar to reference condition  
(may need more restoration effort)



The **Landscape Departure** layer can be used to prioritize entire landscapes based on restoration need. Although useful for broad-level decisions at a landscape level, the Landscape Departure layer does not provide information about what may be "wrong" with a particular landscape in terms of succession class composition. Analyses at the succession class and strata (BpS) levels are more helpful for formulating restoration strategies. -FRCCMT user guide





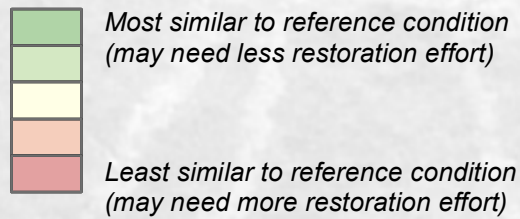
SAN JUAN COUNTY, UTAH

**DRAFT 10 MAY, 2012**

**"Crucial Habitat" Areas  
and Relative Need for Restoration Activities**

 Crucial Winter Habitat Areas  
for Rocky Mtn. Elk

**Landscape Departure**



The **Landscape Departure** layer can be used to prioritize entire landscapes based on restoration need. Although useful for broad-level decisions at a landscape level, the Landscape Departure layer does not provide information about what may be "wrong" with a particular landscape in terms of succession class composition. Analyses at the succession class and strata (BpS) levels are more helpful for formulating restoration strategies. -FRCCMT user guide






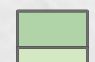
SAN JUAN COUNTY, UTAH

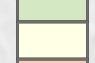
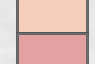

**DRAFT 10 MAY, 2012**

**"Crucial Habitat" Areas  
and Relative Need for Restoration Activities**

 Crucial Year Long Habitat Areas  
for Rocky Mtn. Elk

**Landscape Departure**

 Most similar to reference condition  
(may need less restoration effort)

Least similar to reference condition  
(may need more restoration effort)

0 5 10 20 Miles


The **Landscape Departure** layer can be used to prioritize entire landscapes based on restoration need. Although useful for broad-level decisions at a landscape level, the Landscape Departure layer does not provide information about what may be "wrong" with a particular landscape in terms of succession class composition. Analyses at the succession class and strata (BpS) levels are more helpful for formulating restoration strategies. -FRCCMT user guide



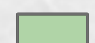
SAN JUAN COUNTY, UTAH


**DRAFT 10 MAY, 2012**


**"Crucial Habitat" Areas  
and Relative Need for Restoration Activities**

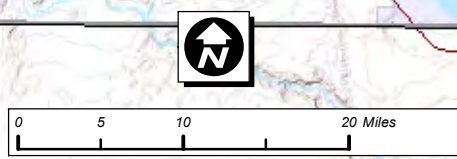
 Crucial Year Long Habitat Area  
for Desert Bighorn Sheep

**Landscape Departure**

 Most similar to reference condition  
(may need less restoration effort)



 Least similar to reference condition  
(may need more restoration effort)



The **Landscape Departure** layer can be used to prioritize entire landscapes based on restoration need. Although useful for broad-level decisions at a landscape level, the Landscape Departure layer does not provide information about what may be "wrong" with a particular landscape in terms of succession class composition. Analyses at the succession class and strata (BpS) levels are more helpful for formulating restoration strategies. -FRCCMT user guide





SAN JUAN COUNTY, UTAH

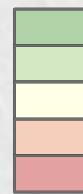
**DRAFT 10 MAY, 2012**

**"Crucial Habitat" Areas  
and Relative Need for Restoration Activities**



Crucial Year Long Habitat Areas  
for Pronghorn

**Landscape Departure**



Most similar to reference condition  
(may need less restoration effort)

Least similar to reference condition  
(may need more restoration effort)


The **Landscape Departure** layer can be used to prioritize entire landscapes based on restoration need. Although useful for broad-level decisions at a landscape level, the Landscape Departure layer does not provide information about what may be "wrong" with a particular landscape in terms of succession class composition. Analyses at the succession class and strata (BpS) levels are more helpful for formulating restoration strategies. -FRCCMT user guide



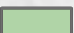
SAN JUAN COUNTY, UTAH



**DRAFT 10 MAY, 2012**

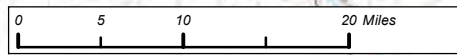
**"Crucial Habitat" Areas  
and Relative Need for Restoration Activities**

 Crucial Year Long Habitat Area  
for Black Bear

**Landscape Departure**

 Most similar to reference condition  
(may need less restoration effort)

  Least similar to reference condition  
(may need more restoration effort)



The **Landscape Departure** layer can be used to prioritize entire landscapes based on restoration need. Although useful for broad-level decisions at a landscape level, the Landscape Departure layer does not provide information about what may be "wrong" with a particular landscape in terms of succession class composition. Analyses at the succession class and strata (BpS) levels are more helpful for formulating restoration strategies. **-FRCCMT user guide**





SAN JUAN COUNTY, UTAH

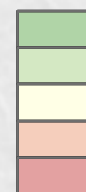
**DRAFT 09 MAY, 2012**

**"Crucial Habitat" Representation Scenarios  
and Relative Need for Restoration Activities**



Areas with this pattern capture  
~25% of DWR Crucial Habitats  
for the species identified at right

**Landscape Departure**



Most similar to reference condition  
(may need less restoration effort)

Least similar to reference condition  
(may need more restoration effort)

**Crucial Habitat Targets:**

Black bear year long  
Desert bighorn sheep year long  
Elk spring / fall  
Elk summer  
Elk winter  
Elk year long  
Mule deer spring/fall  
Mule deer summer  
Mule deer winter  
Mule deer year long  
Pronghorn year long

The **Landscape Departure** layer can be used to prioritize entire landscapes based on restoration need. Although useful for broad-level decisions at a landscape level, the Landscape Departure layer does not provide information about what may be "wrong" with a particular landscape in terms of succession class composition. Analyses at the succession class and strata (BpS) levels are more helpful for formulating restoration strategies. -FRCCMT user guide





SAN JUAN COUNTY, UTAH

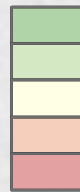
**DRAFT 09 MAY, 2012**

**"Crucial Habitat" Representation Scenarios  
and Relative Need for Restoration Activities**



Areas with this pattern capture  
~50% of DWR Crucial Habitats  
for the species identified at right

**Landscape Departure**



Most similar to reference condition  
(may need less restoration effort)

Least similar to reference condition  
(may need more restoration effort)

**Crucial Habitat Targets:**

- Black bear year long
- Desert bighorn sheep year long
- Elk spring / fall
- Elk summer
- Elk winter
- Elk year long
- Mule deer spring/fall
- Mule deer summer
- Mule deer winter
- Mule deer year long
- Pronghorn year long

The **Landscape Departure** layer can be used to prioritize entire landscapes based on restoration need. Although useful for broad-level decisions at a landscape level, the Landscape Departure layer does not provide information about what may be "wrong" with a particular landscape in terms of succession class composition. Analyses at the succession class and strata (BpS) levels are more helpful for formulating restoration strategies. **-FRCCMT user guide**





SAN JUAN COUNTY, UTAH

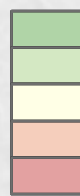
**DRAFT 09 MAY, 2012**

**"Crucial Habitat" Representation Scenarios  
and Relative Need for Restoration Activities**



Areas with this pattern capture  
~75% of DWR Crucial Habitats  
for the species identified at right

**Landscape Departure**



Most similar to reference condition  
(may need less restoration effort)

Least similar to reference condition  
(may need more restoration effort)

**Crucial Habitat Targets:**

- Black bear year long
- Desert bighorn sheep year long
- Elk spring / fall
- Elk summer
- Elk winter
- Elk year long
- Mule deer spring/fall
- Mule deer summer
- Mule deer winter
- Mule deer year long
- Pronghorn year long

The **Landscape Departure** layer can be used to prioritize entire landscapes based on restoration need. Although useful for broad-level decisions at a landscape level, the Landscape Departure layer does not provide information about what may be "wrong" with a particular landscape in terms of succession class composition. Analyses at the succession class and strata (BpS) levels are more helpful for formulating restoration strategies. **-FRCCMT user guide**



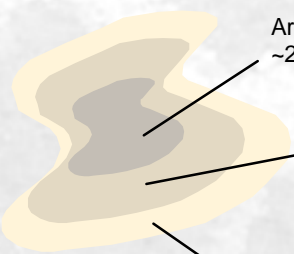


SAN JUAN COUNTY, UTAH

**DRAFT 09 MAY, 2012**

**"Crucial Habitat" Representation Scenarios**

Shaded areas represent options for representing 25/50/75% of "crucial habitats" as identified by the Utah Division of Wildlife Resources

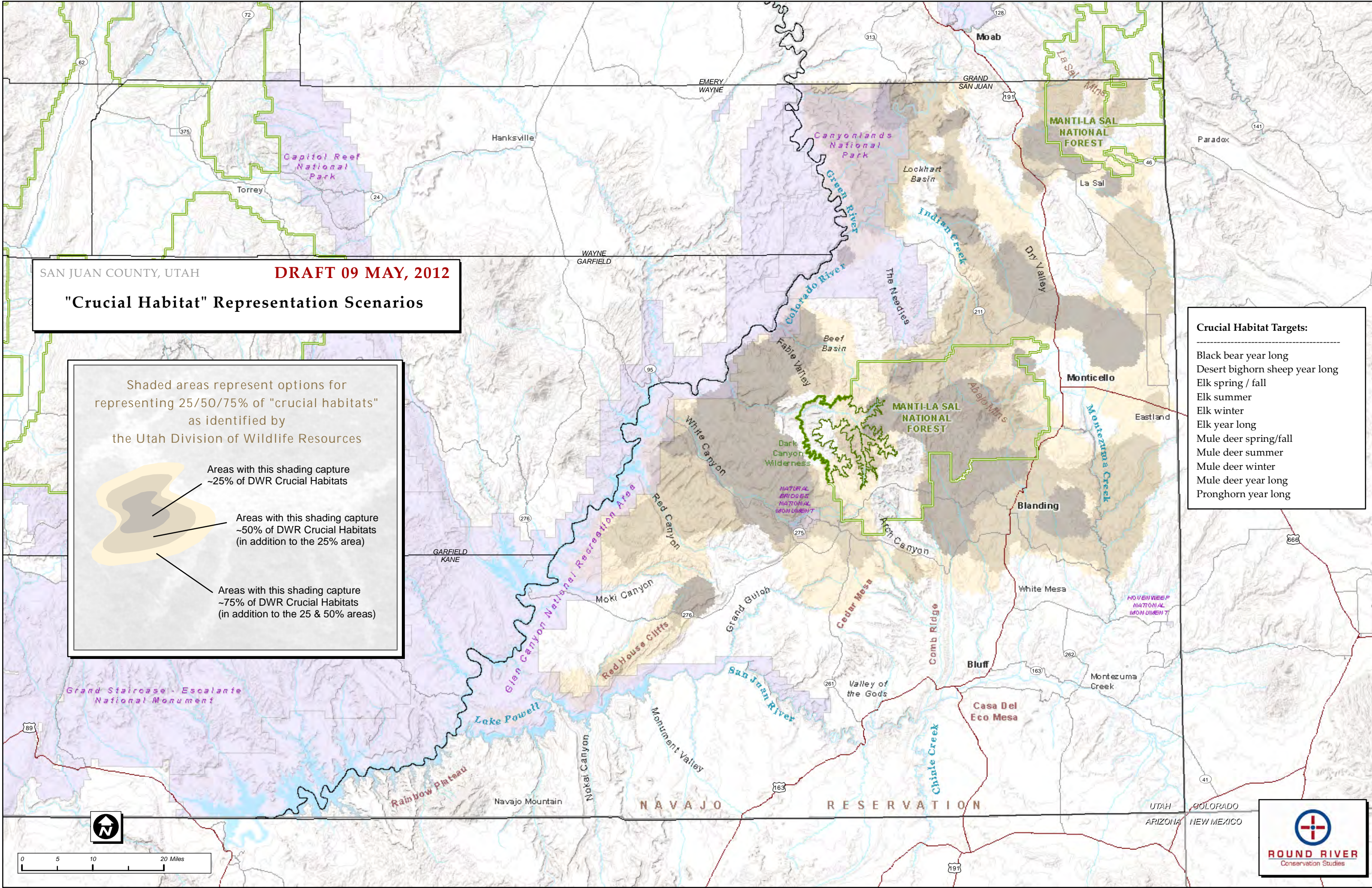


Areas with this shading capture ~25% of DWR Crucial Habitats

Areas with this shading capture ~50% of DWR Crucial Habitats (in addition to the 25% area)

Areas with this shading capture ~75% of DWR Crucial Habitats (in addition to the 25 & 50% areas)

- Crucial Habitat Targets:**
- Black bear year long
  - Desert bighorn sheep year long
  - Elk spring / fall
  - Elk summer
  - Elk winter
  - Elk year long
  - Mule deer spring/fall
  - Mule deer summer
  - Mule deer winter
  - Mule deer year long
  - Pronghorn year long



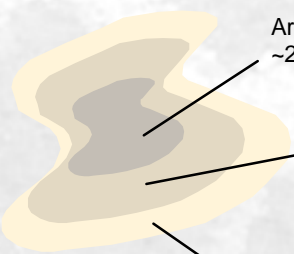


SAN JUAN COUNTY, UTAH

**DRAFT 07 MAY, 2012**

**"Crucial Habitat" Representation Scenarios**

Shaded areas represent options for representing 25/50/75% of "crucial habitats" as identified by the Utah Division of Wildlife Resources



Areas with this shading capture ~25% of DWR Crucial Habitats

Areas with this shading capture ~50% of DWR Crucial Habitats (in addition to the 25% area)

Areas with this shading capture ~75% of DWR Crucial Habitats (in addition to the 25 & 50% areas)

- Crucial Habitat Targets:**
- Band-tailed Pigeon spring / early fall
  - Black bear year long
  - Blue grouse year long
  - Chukar partridge winter
  - Desert bighorn sheep year long
  - Elk spring / fall
  - Elk summer
  - Elk winter
  - Elk year long
  - Gunnison sage grouse brood/winter
  - Gunnison sage grouse winter
  - Mule deer spring/fall
  - Mule deer summer
  - Mule deer winter
  - Mule deer year long
  - Pronghorn year long
  - Wild turkey Spring/Summer/fall
  - Wild turkey year long

